

IB 2022-19 STRUCTURED LOCAL AREA NETWORK (LAN)
CABLING AT LA TRINIDAD CAMPUS - PLANS

COPPER NETWORK UPLINKS

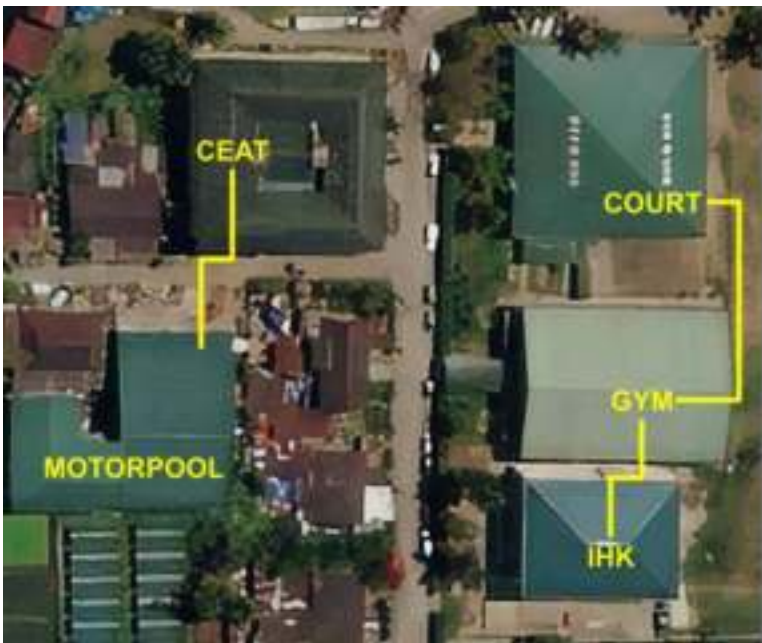


Figure 1. Copper Uplinks North Campus



Figure 2. Copper Uplinks Northwest Campus



Figure 3. Copper Uplinks Central Campus A



Figure 4. Copper Uplinks Central Campus B



Figure 5. Copper Uplinks Central Campus C

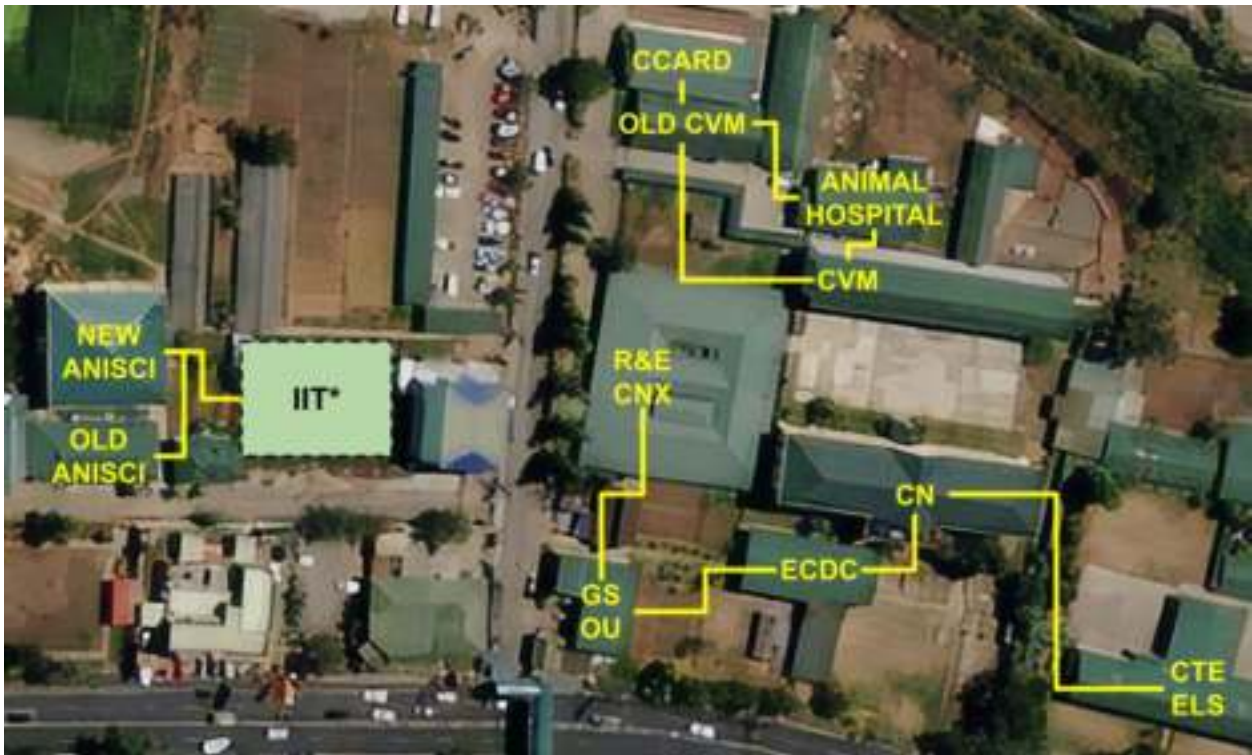


Figure 6. Copper Uplinks South Campus

NOTE: The supplier will adhere to the following:

- All outdoor copper uplinks will be securely attached to 304 stainless steel messenger rope wire kits with the minimum specifications indicated below.

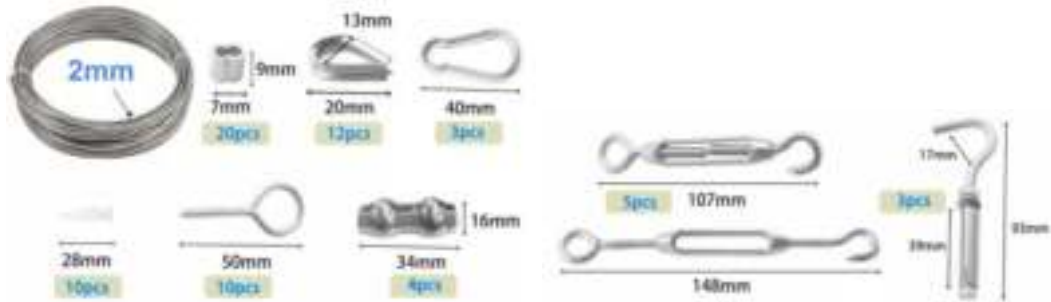


Figure 7. Minimum requirements for outdoor copper uplink messenger.

- CAT6 Outdoor cables will be used for Outdoor links between network devices.
- CAT6 Indoor cables will be used for Indoor links between network devices.
- CAT5e cables will be used for end device links.
- Ethernet cables to be used must contain the Underwriters Laboratory (UL) badges/marks.
- Ethernet cables to be used must be made of pure copper. Copper clad aluminum cables will be REJECTED.
- Ethernet cables to be used must be Plenum-rated.
- 9U-12U wall mounted data cabinets will each be installed at locations that will house PoE switches as listed below:
 - College of Agriculture
 - Back Hallway, First Floor
 - Hallway, Second Floor
 - Hallway, Third Floor
 - Hallway, DAEAM
 - Old Animal Science Building
 - Hallway, First Floor, New Animal Science Building

- Former College of Arts & Sciences Main
 - Hallway, Ground Floor
 - Hallway, Second Floor
- Former College of Arts & Sciences Annex
 - Hallway, First Floor
- College of Engineering
 - Main Lobby, First Floor
 - Lobby, Second Floor
 - Hallway, Third Floor
- College of Forestry
 - Hallway, First Floor
- New College of Home Economics & Technology
 - Hallway, First Floor
 - Hallway, Third Floor
- Old College of Home Economics & Technology
 - Hallway, First Floor
 - Reception Area, Food Processing Center
- College of Human Kinetics
 - Hallway, Second Floor
 - Hallway, Third Floor
 - Covered Court
- College of Nursing
 - Hallway, First Floor
 - Hallway, Third Floor
- College of Teacher Education
 - Front Hallway, First Floor Main
 - Back Hallway, First Floor Main
 - Front Hallway, Second Floor Main
 - Faculty Room, CTE-SLS
- College of Veterinary Medicine
 - Hallway, First Floor
 - Hallway, Third Floor
 - Reception Area, Animal Hospital
 - Lobby, Second Floor, CCARD
- Office for Student Services
 - Lobby, First Floor
- Anthurium Hall
 - Main Hall
- Graduate School & Open University
 - Main Office, Second Floor
- 6U data racks will be installed at the locations listed below:
 - CA-DAEAM PC Laboratory
 - CAS Annex PC Laboratory 1 (Room 208)
 - CAS Annex PC Laboratory 2 (Room 211)
 - CAS Annex PC Laboratory 3 (Room 212a)
 - CE PC Laboratory
 - CF PC Laboratory
 - CTE PC Laboratory 1
 - CTE PC Laboratory 2
- 3U data racks will be installed at the locations listed below:
 - CAS Main PC Laboratory (Biology)
 - CAS Annex PC Laboratory 4 (Room 212b)
 - Old CHET PC Laboratory
 - CN Library
 - CVM Library
 - Graduate School PC Laboratory
- All data cabinets and data racks will contain fully loaded CAT6 24-port punch down copper patch panels complying with ANSI/TIA-568.2-D, ISO/IEC 11801-1 and EN 50173-1 Class E specifications.
- All copper cables will be enclosed in flexible PVC cable raceways.

- Flexible PVC Cable raceways will be secured to walls/ceilings using rivets/screws.
- Cable raceway installations must allow easy access and/or replacement of cable runs.
- Cable raceway installations must have ample space for additional cable runs.
- IP20/IP30/IP40/IP50 rated data cabinets will be used for fully indoor installations.
- IP55/IP65 rated data cabinets will be used for flood prone, partially indoor and outdoor installations.
- All Patch panels will be properly labeled and printed trace maps stickers will be pasted behind the corresponding data cabinet's front door.
- Connect ALL data cabinets to each respective location's electrical circuit complete with an appropriately rated circuit breaker.
- All Data cabinet locks can be opened by a single master key. Multiple copies of this master key will be provided to the university.
- The data cabinet lock type shown or similar to that below are REJECTED.

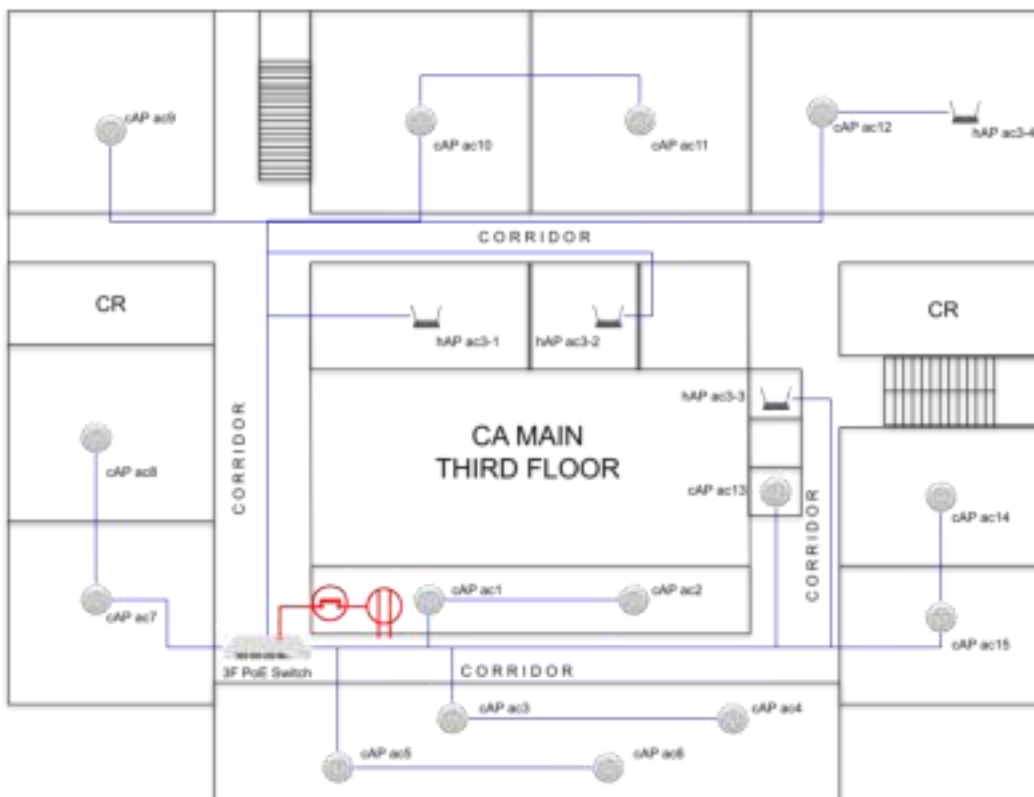
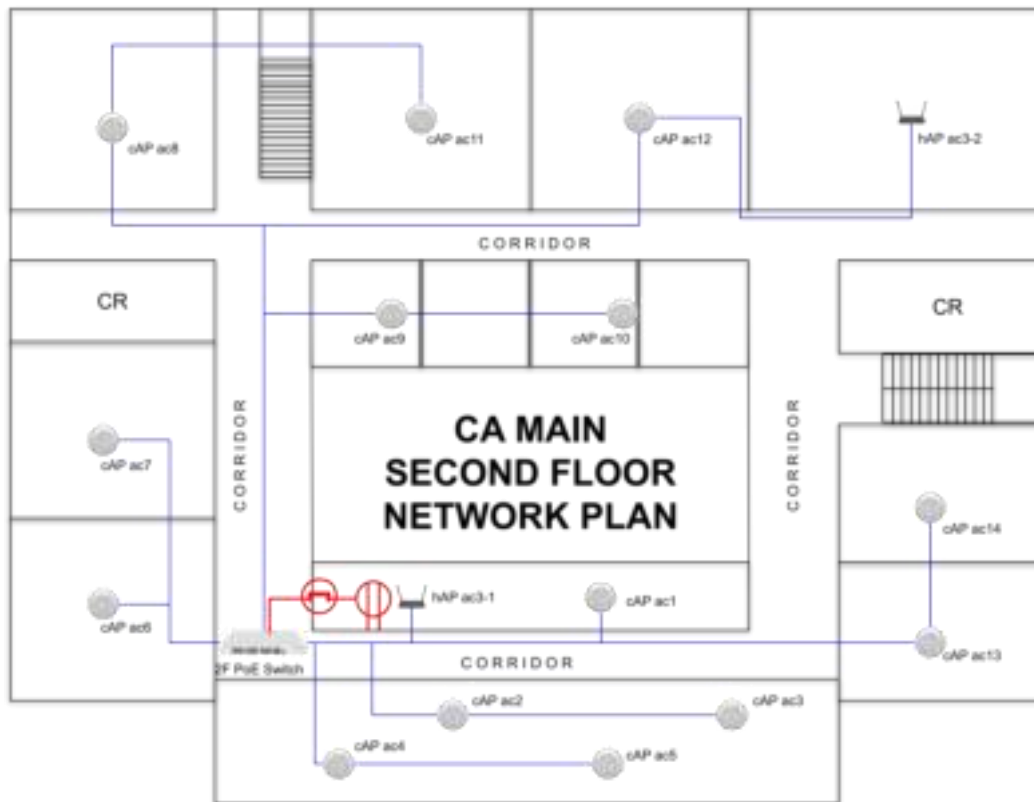


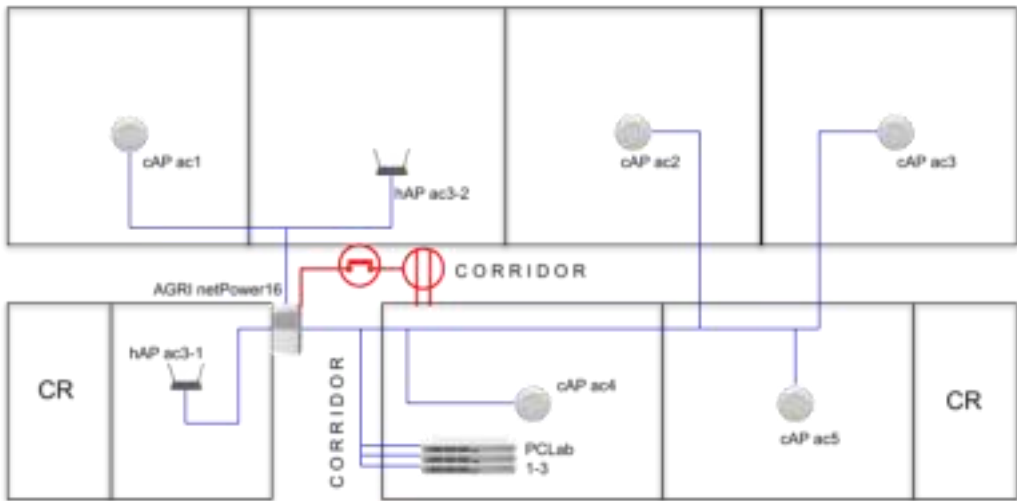
Figure 8. Rejected data cabinet lock and key type

COPPER NETWORK EQUIPMENT DEPLOYMENT PLANS

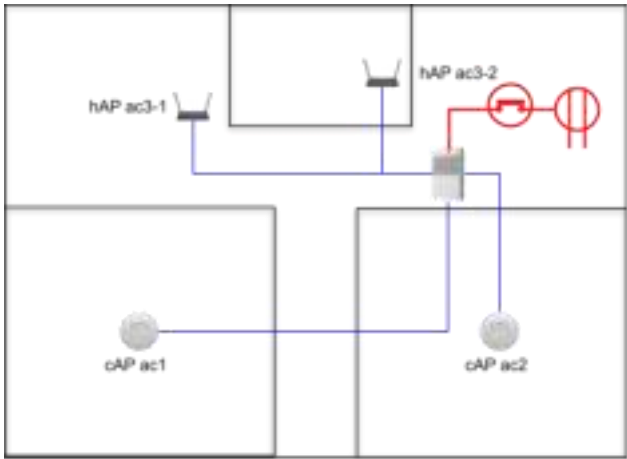
College of Agriculture



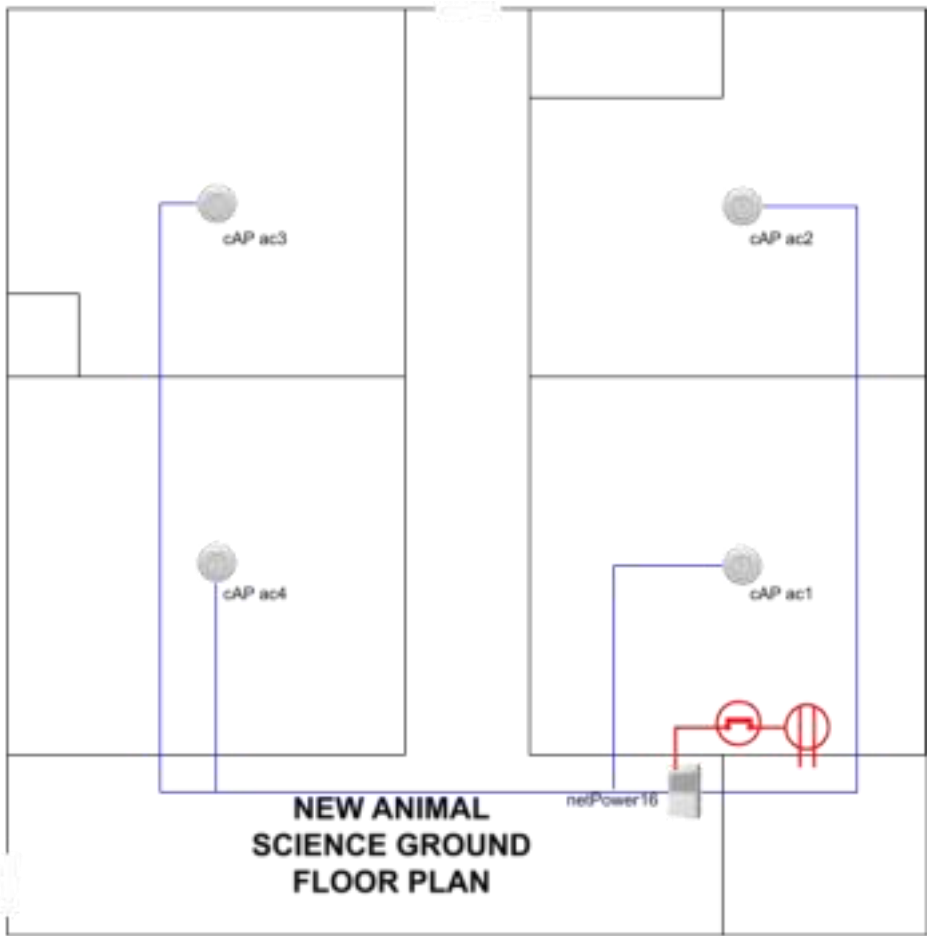


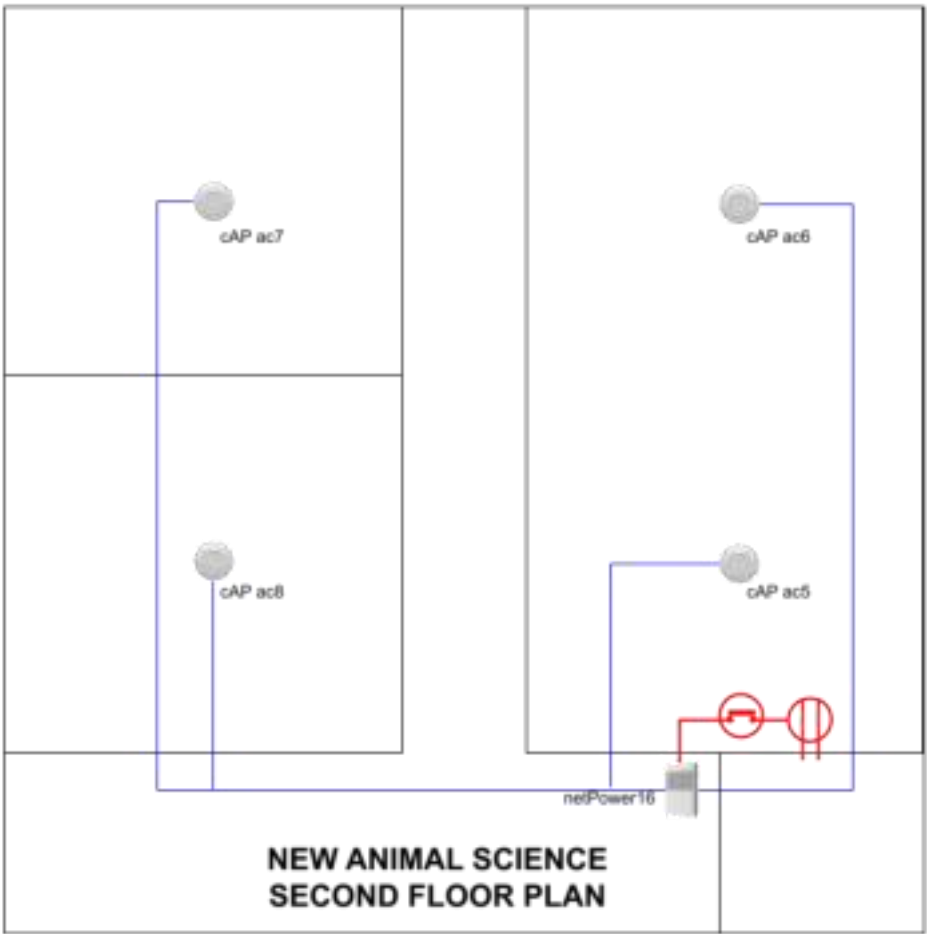


CA DAEAM

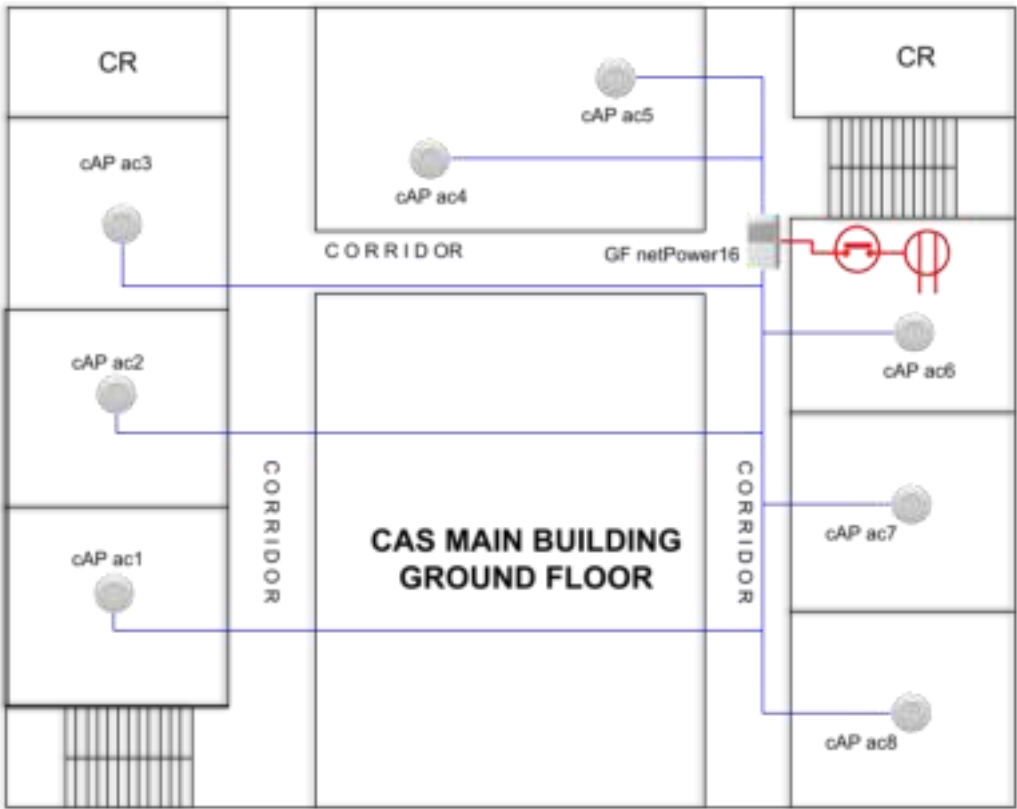


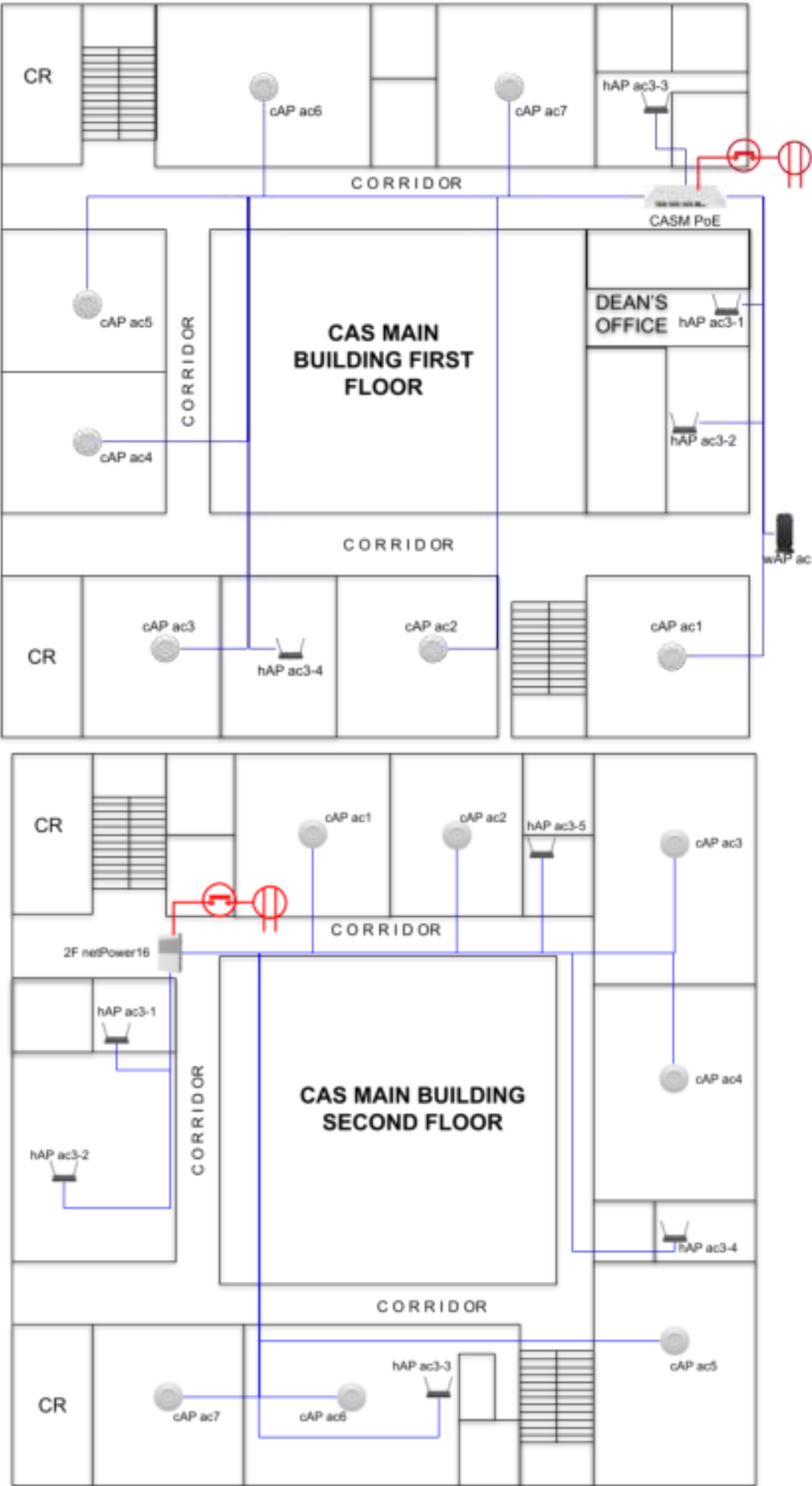
CA OLD ANISCI



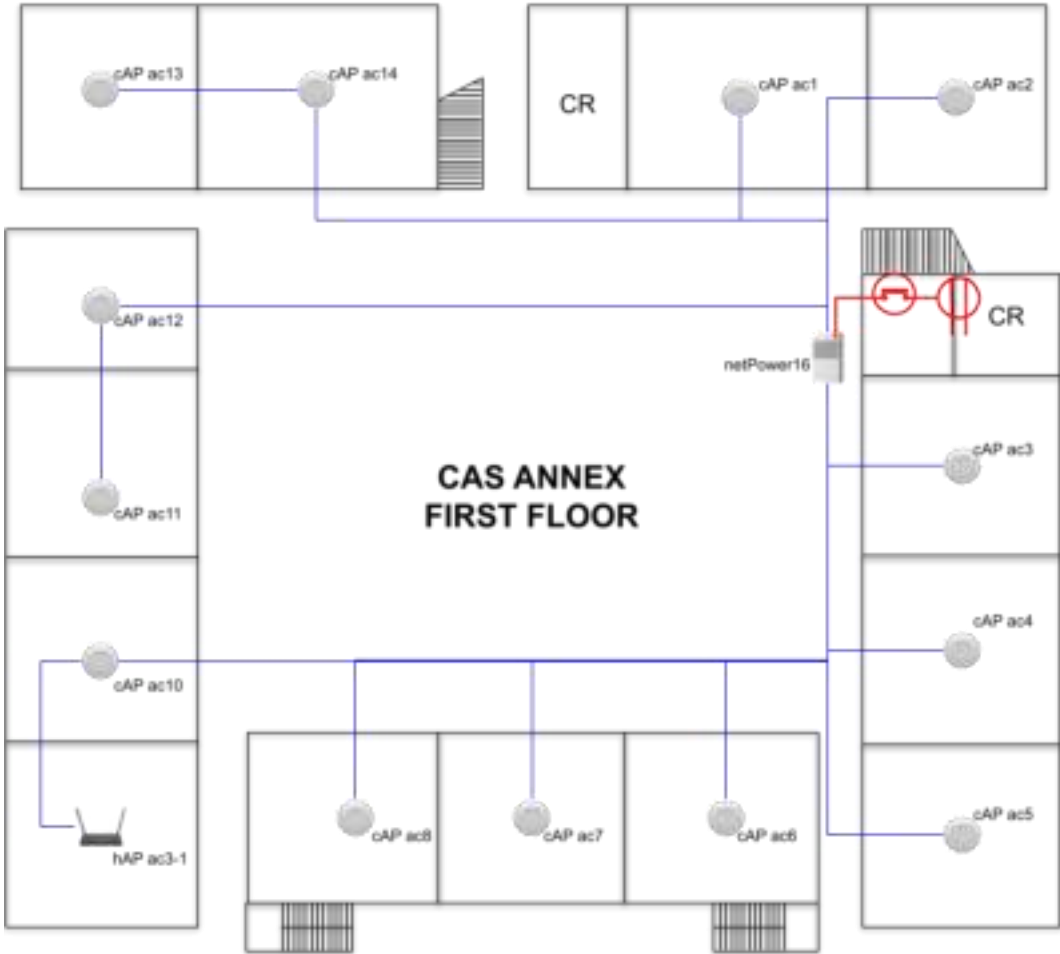


Former College of Arts & Sciences Main Building



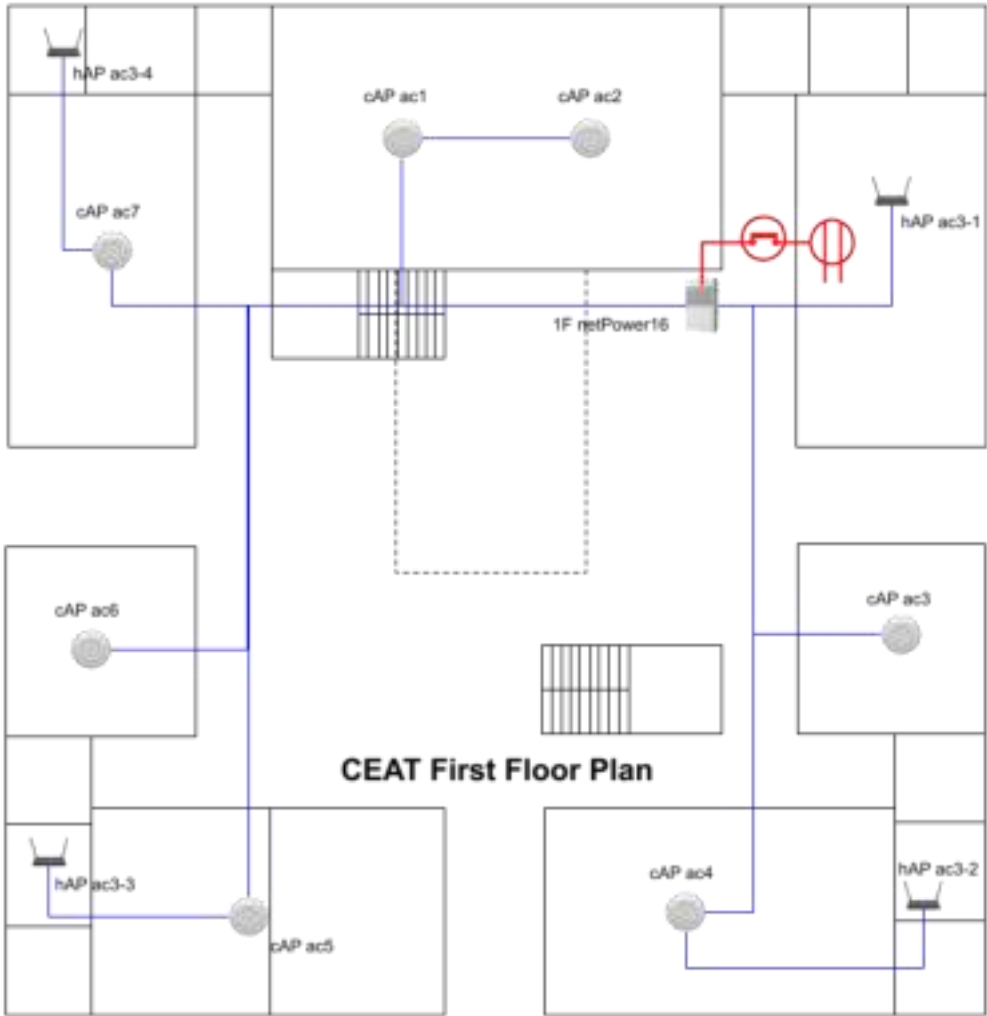


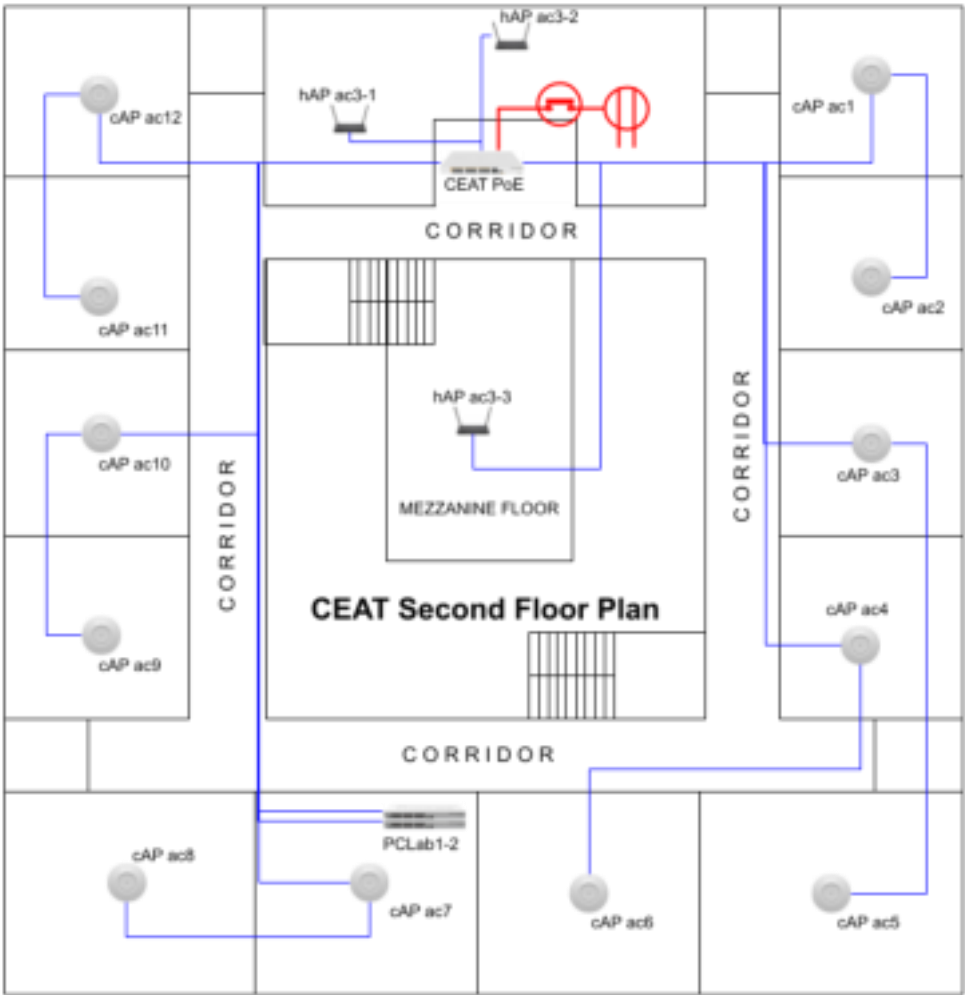
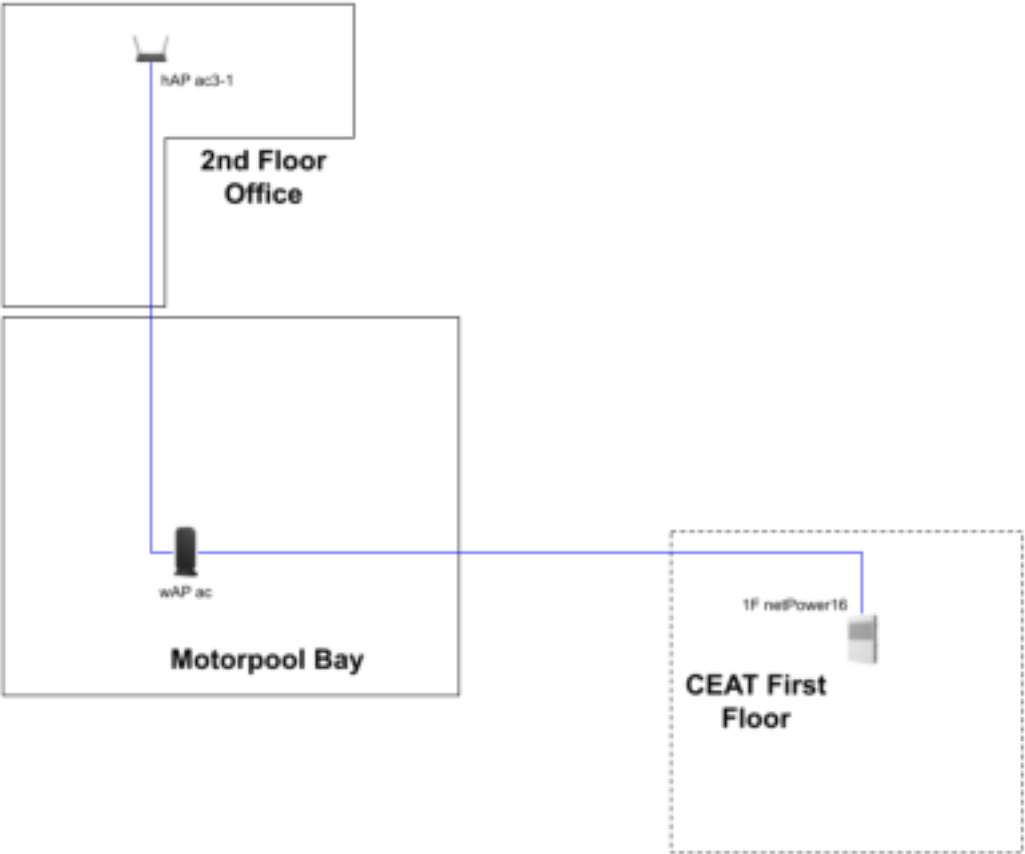
Former College of Arts & Sciences Annex Building

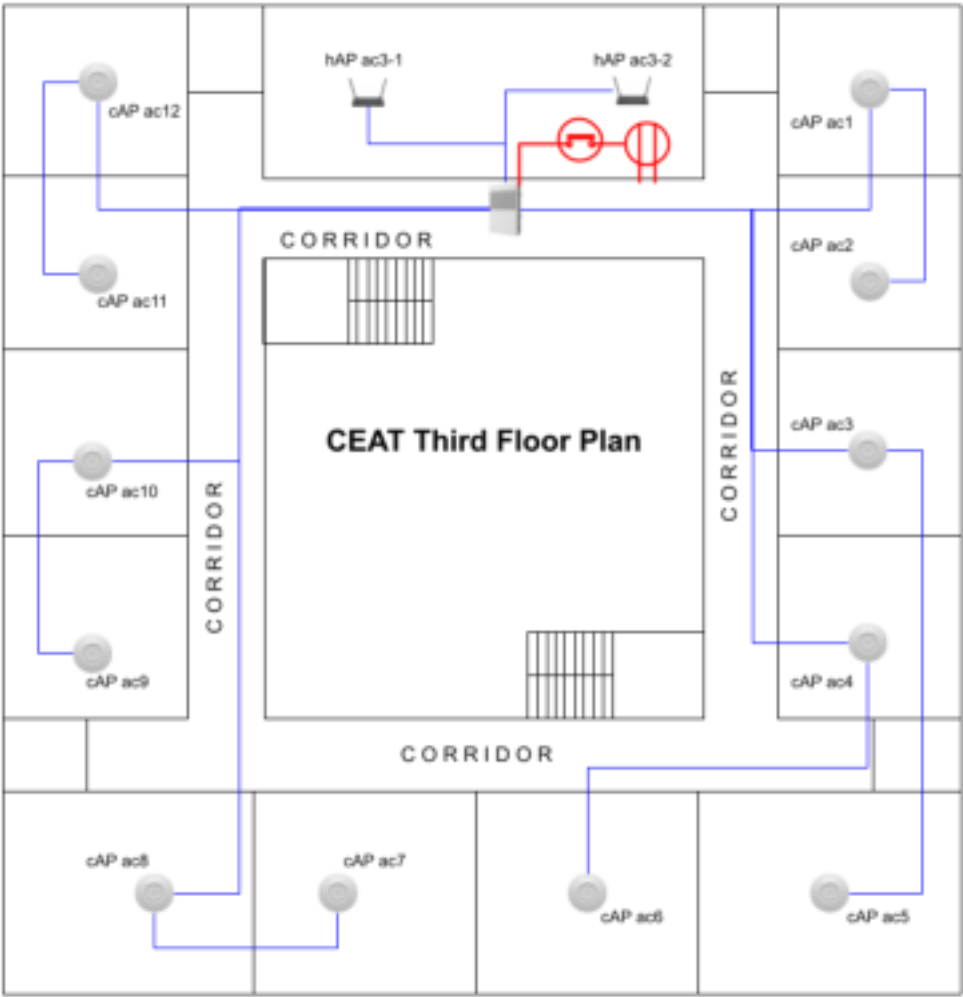




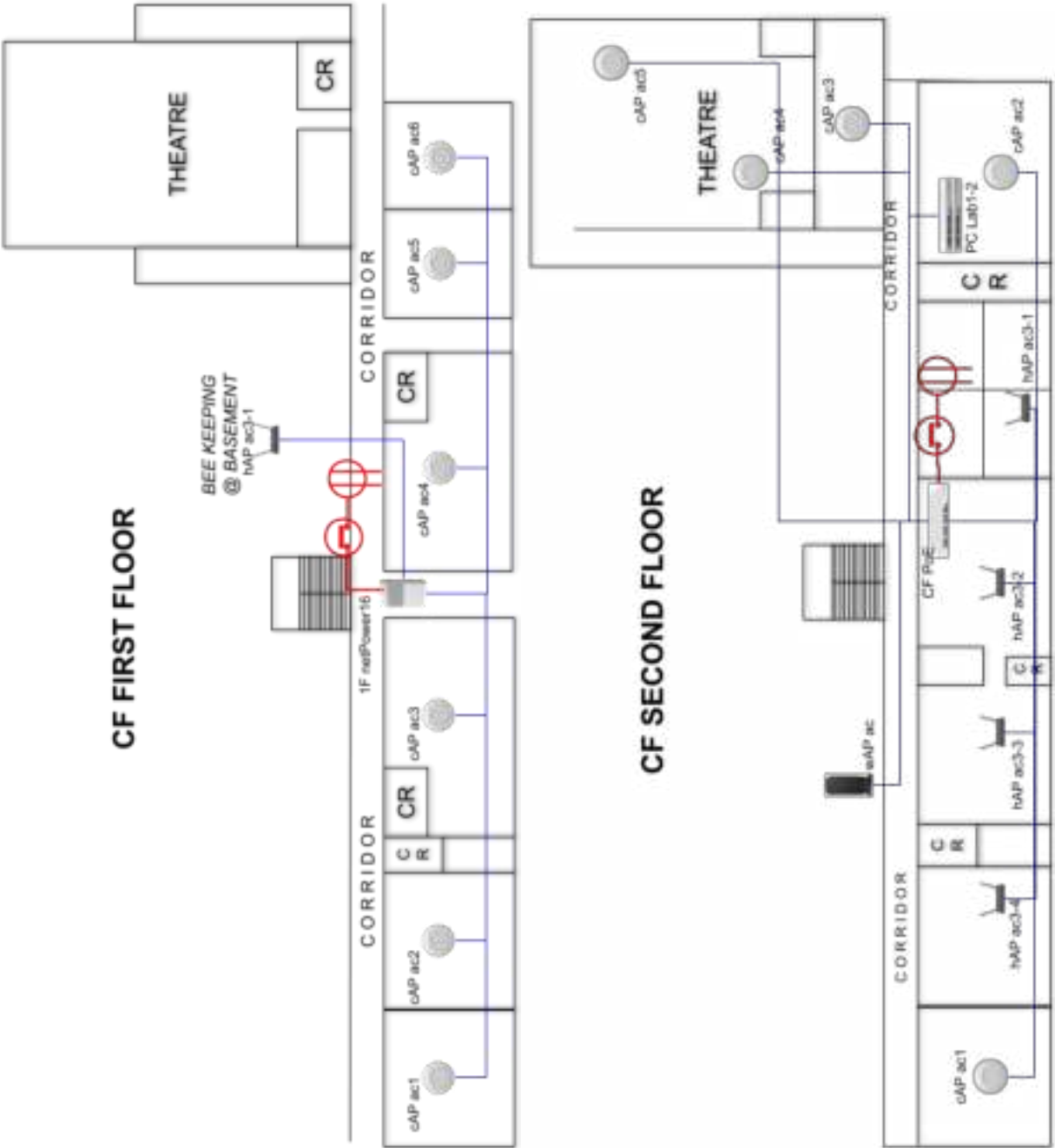
College of Engineering and Motorpool

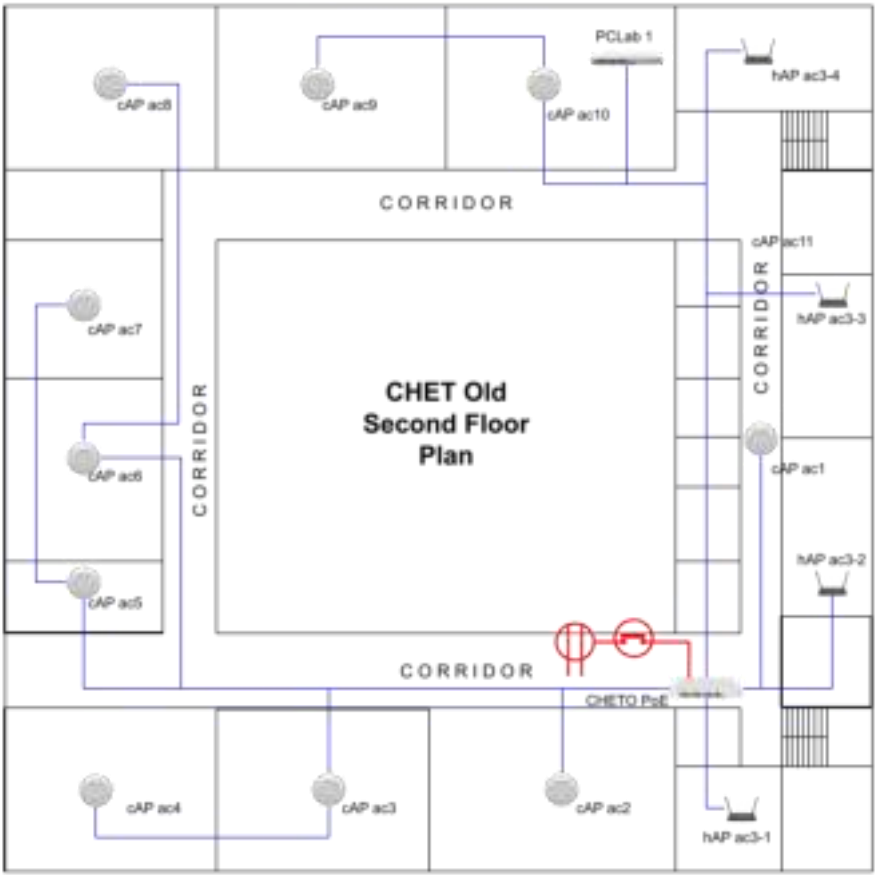
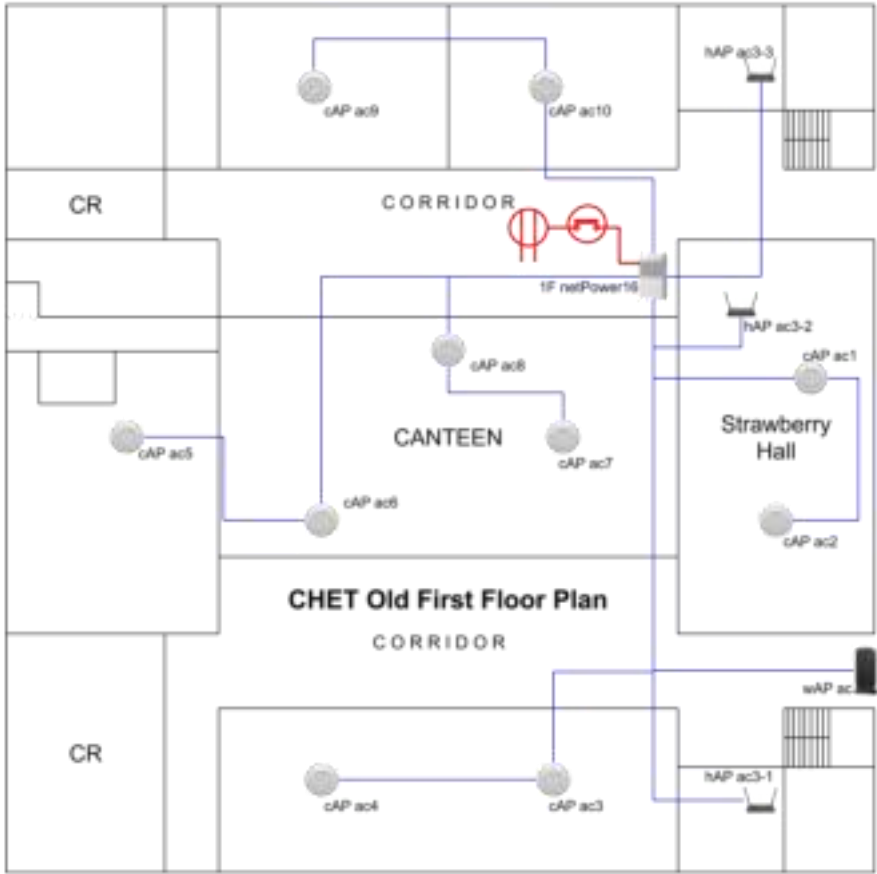


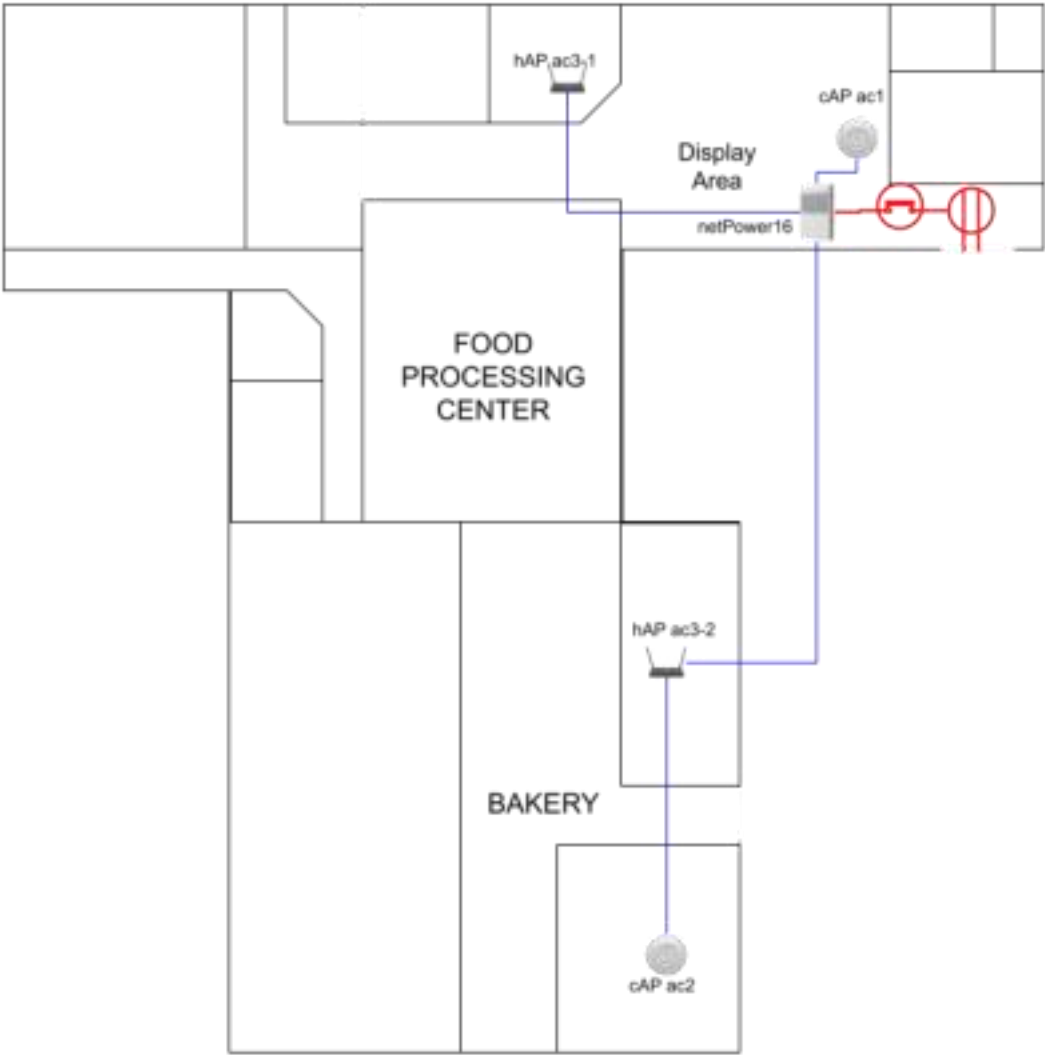




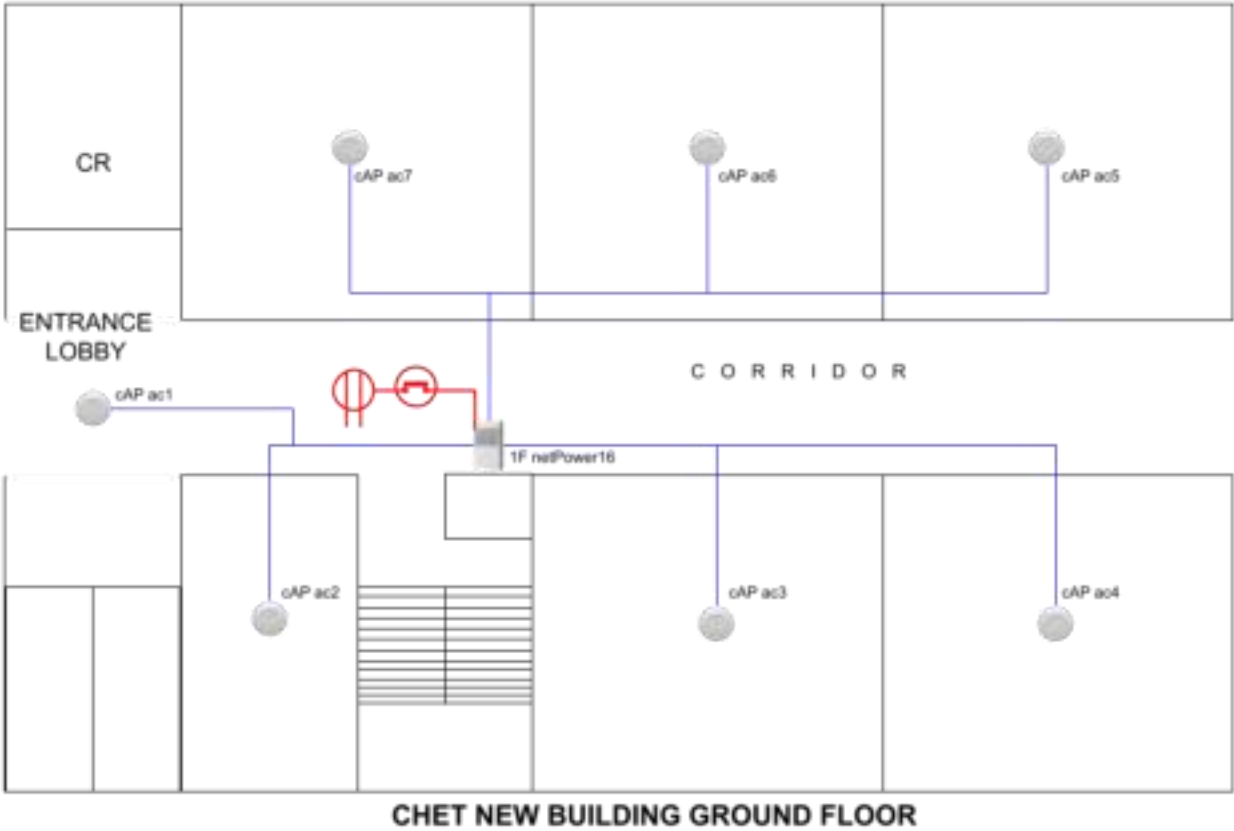
College of Forestry

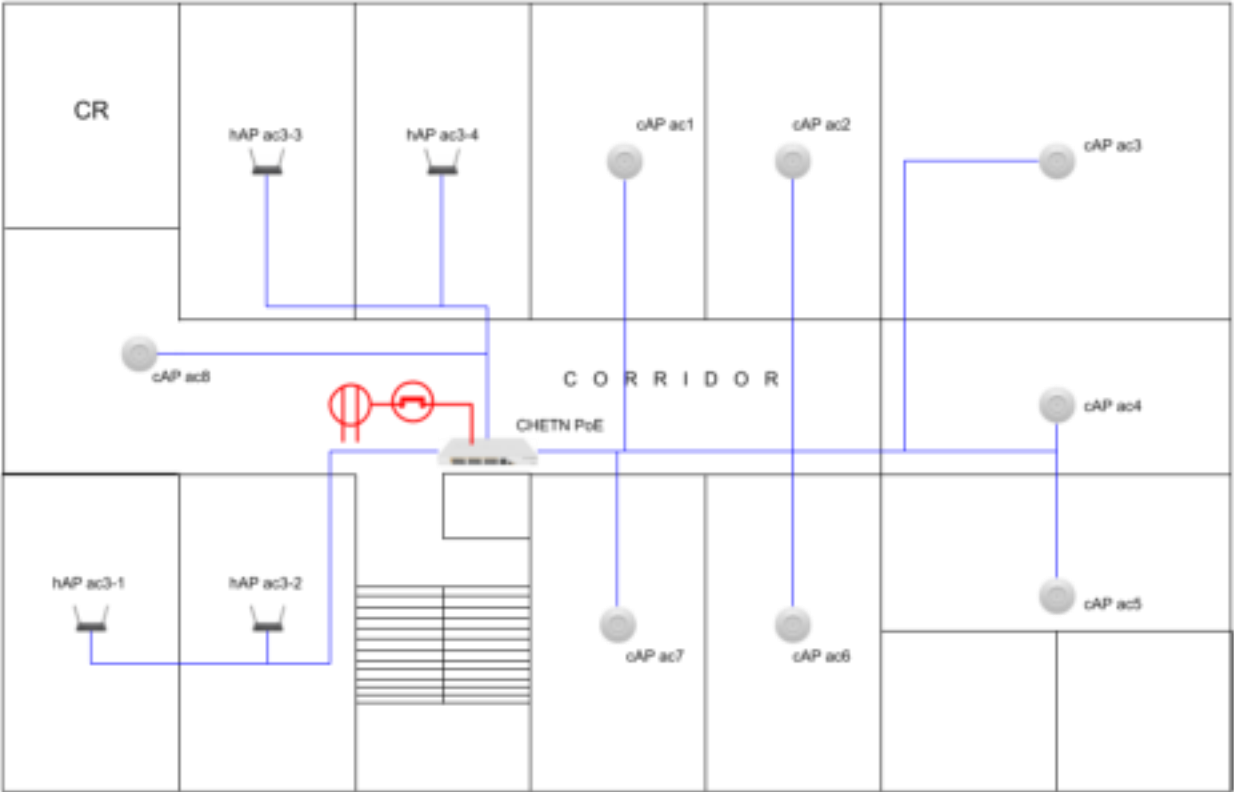




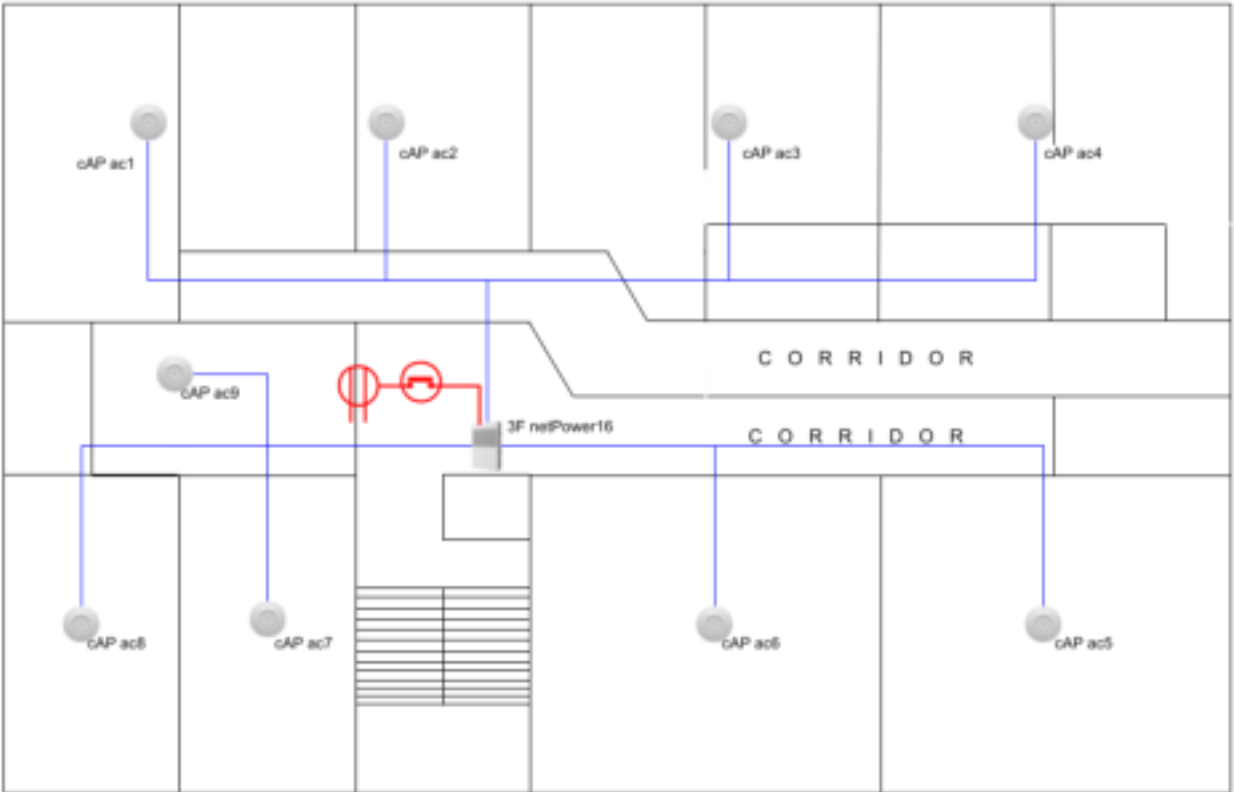


College of Home Economics & Technology New Laboratory Building

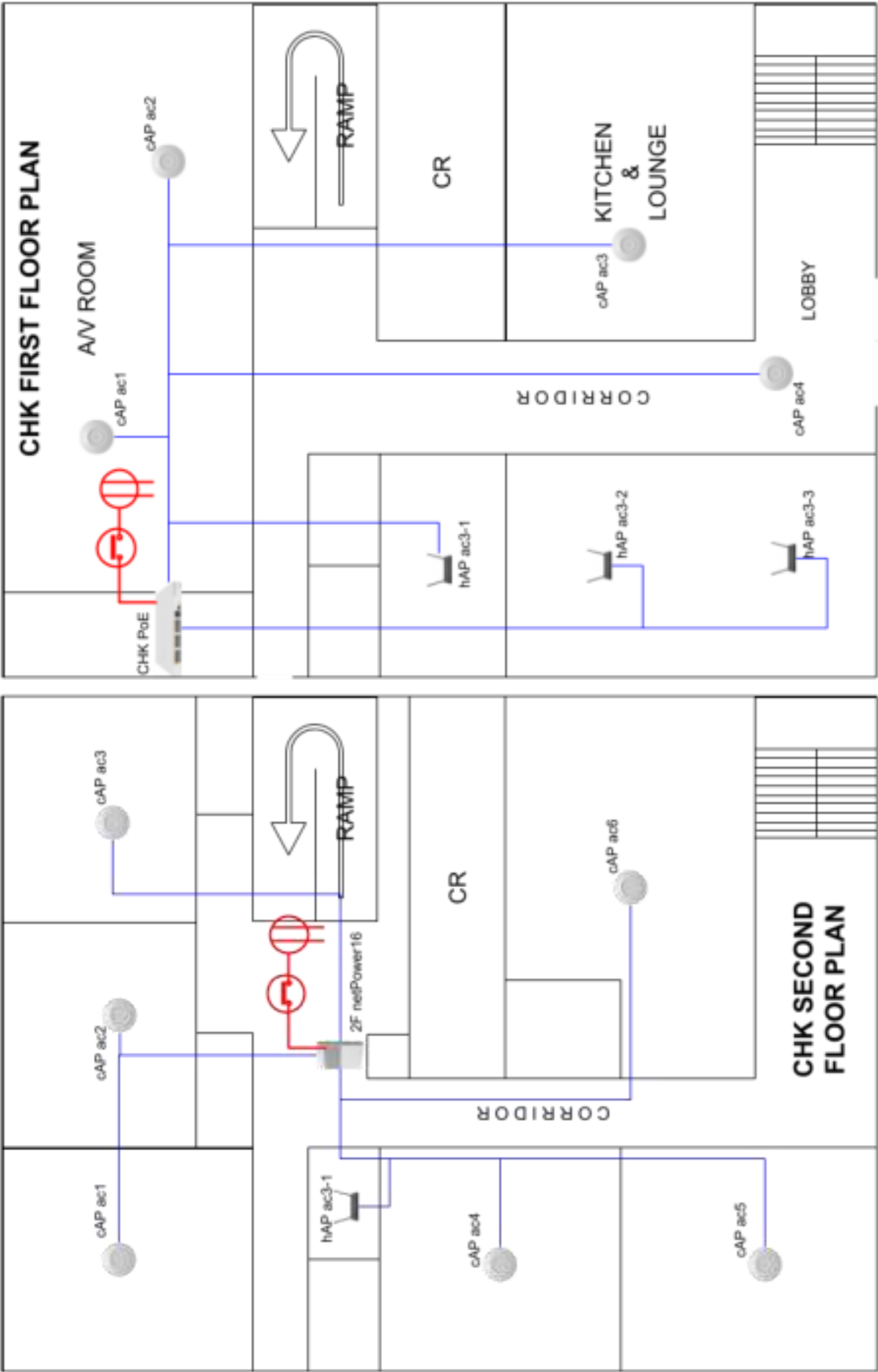


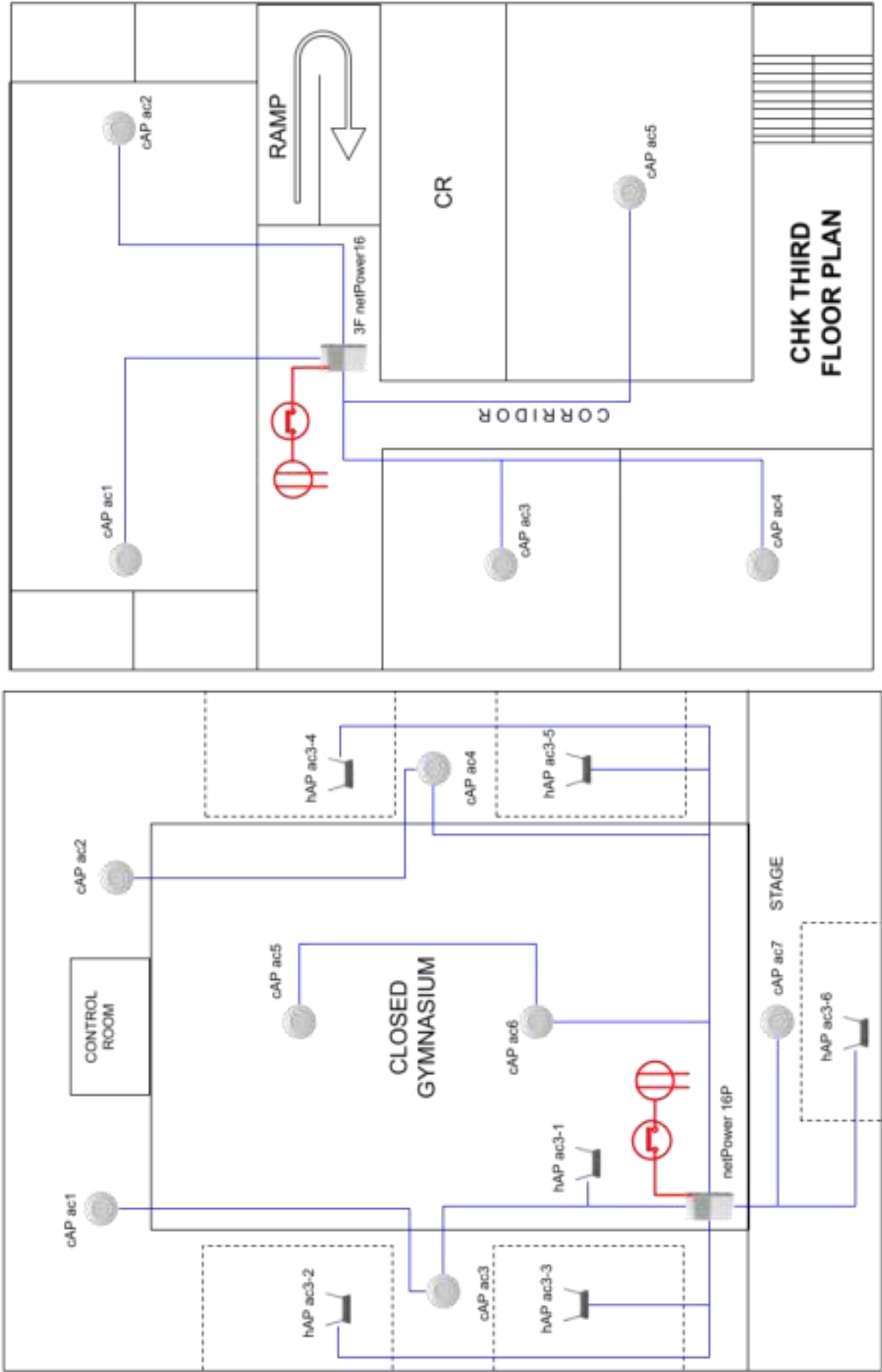


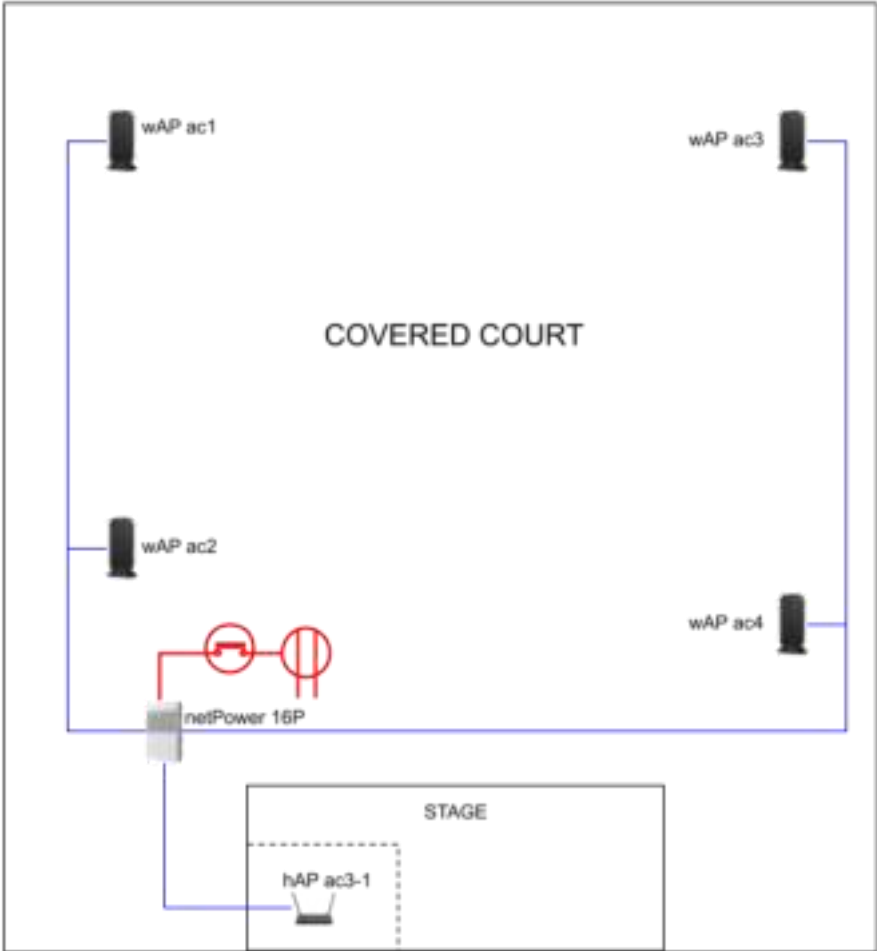
CHET NEW BUILDING SECOND FLOOR

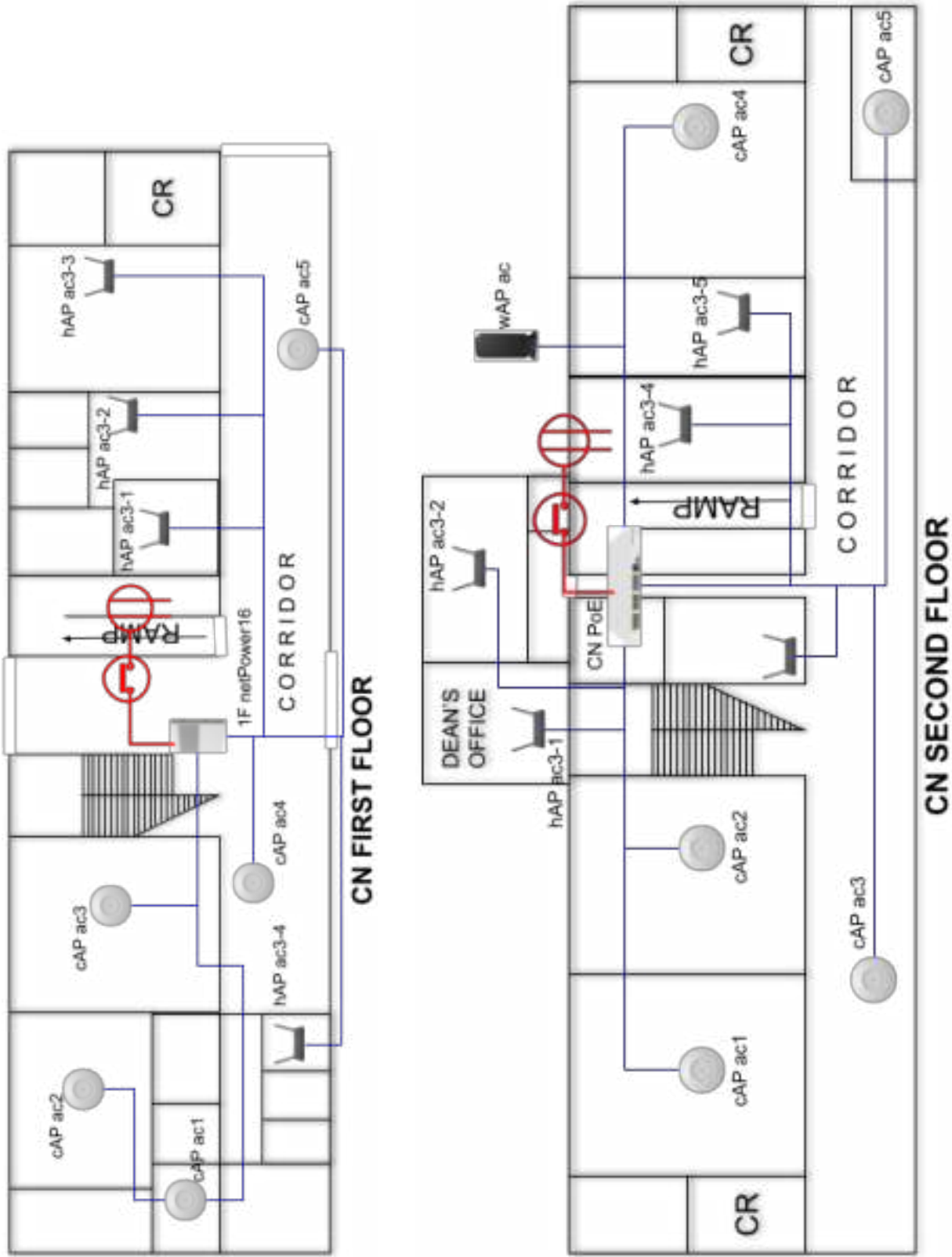


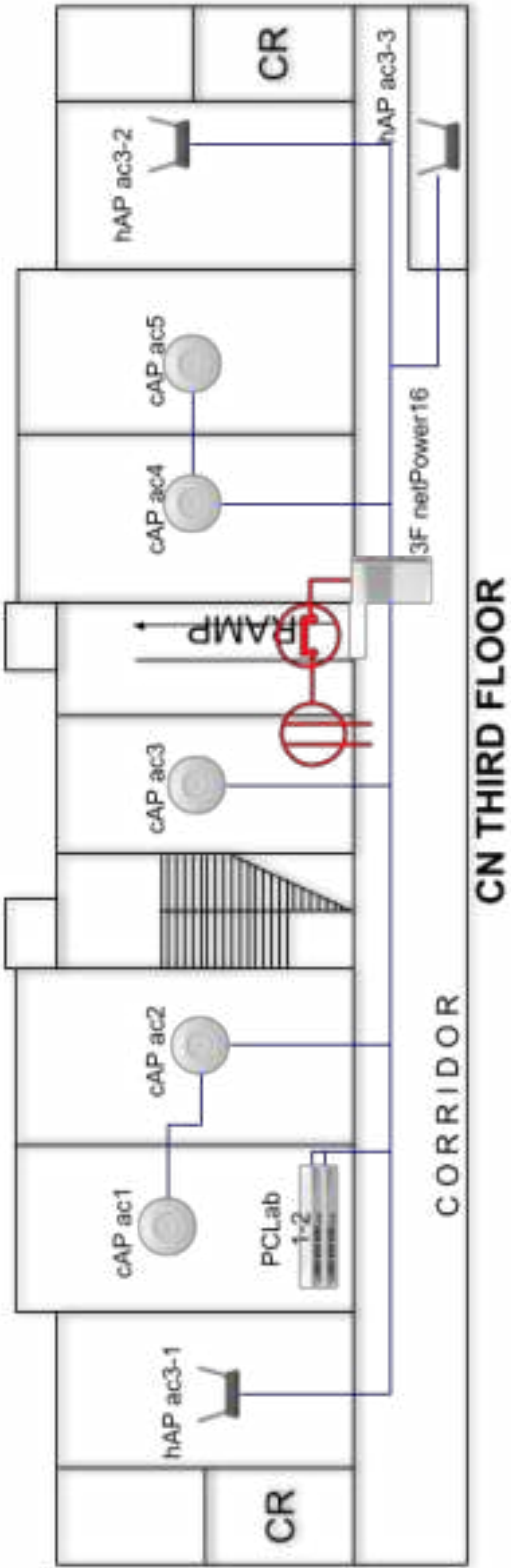
CHET NEW BUILDING THIRD FLOOR



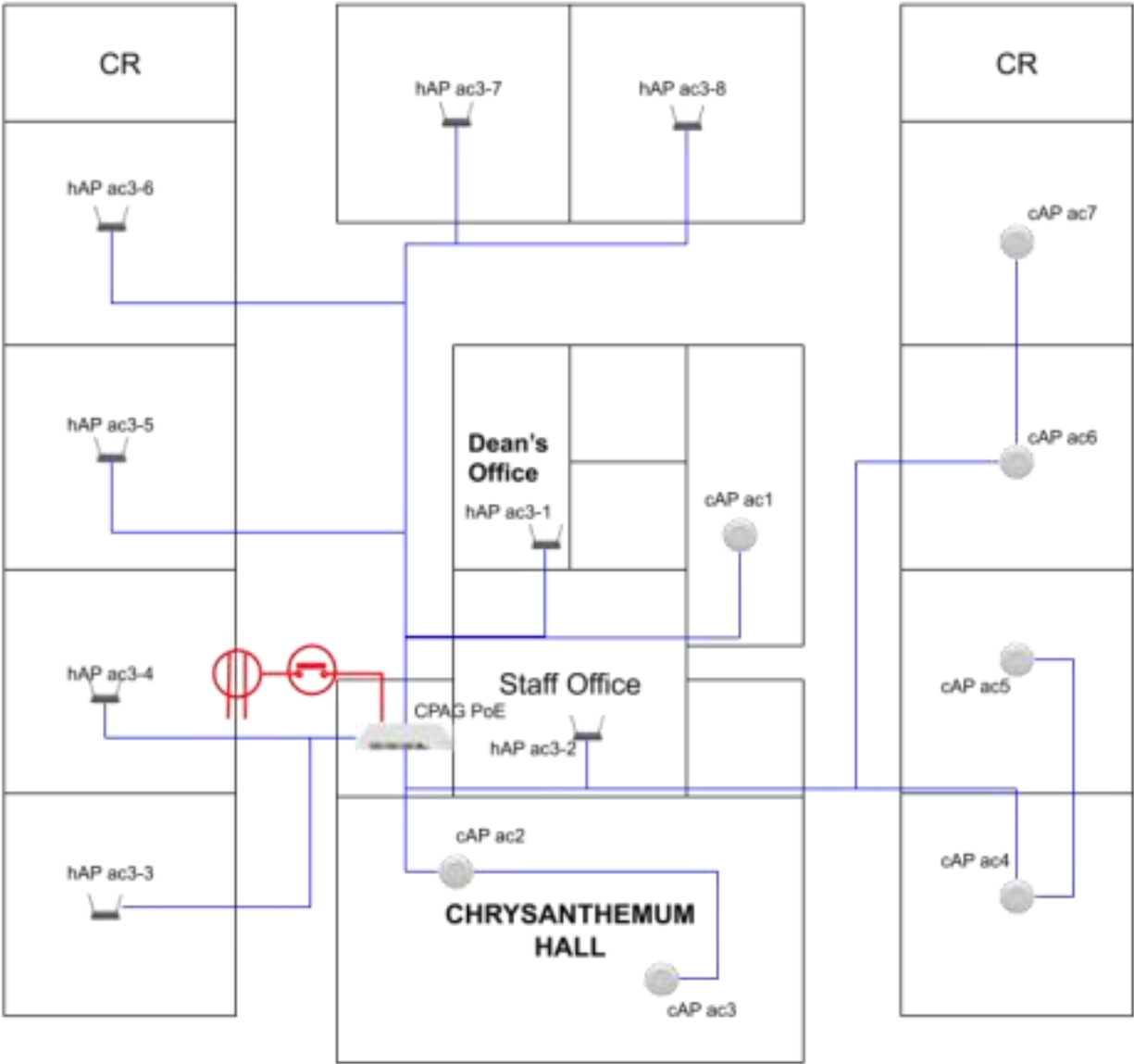




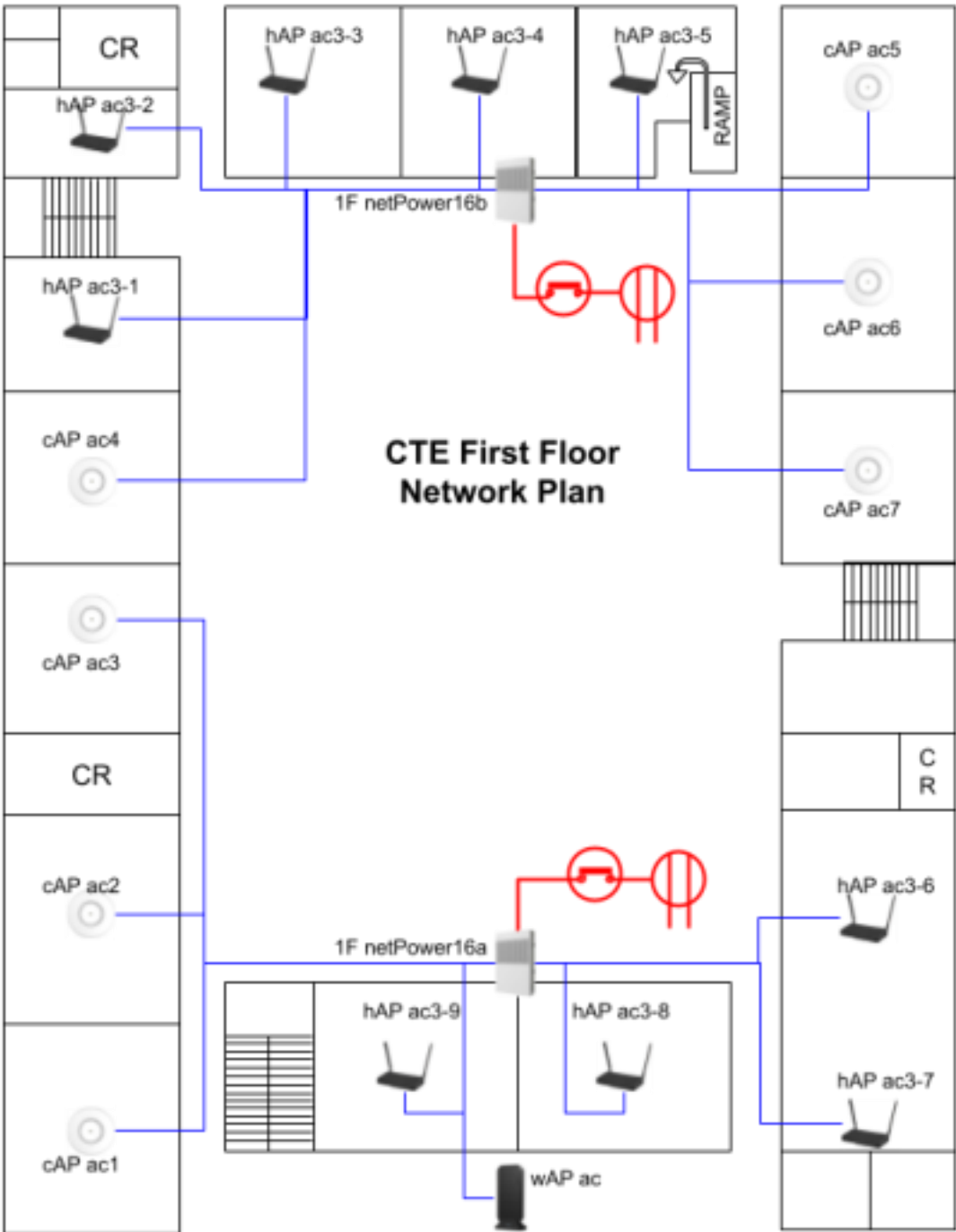


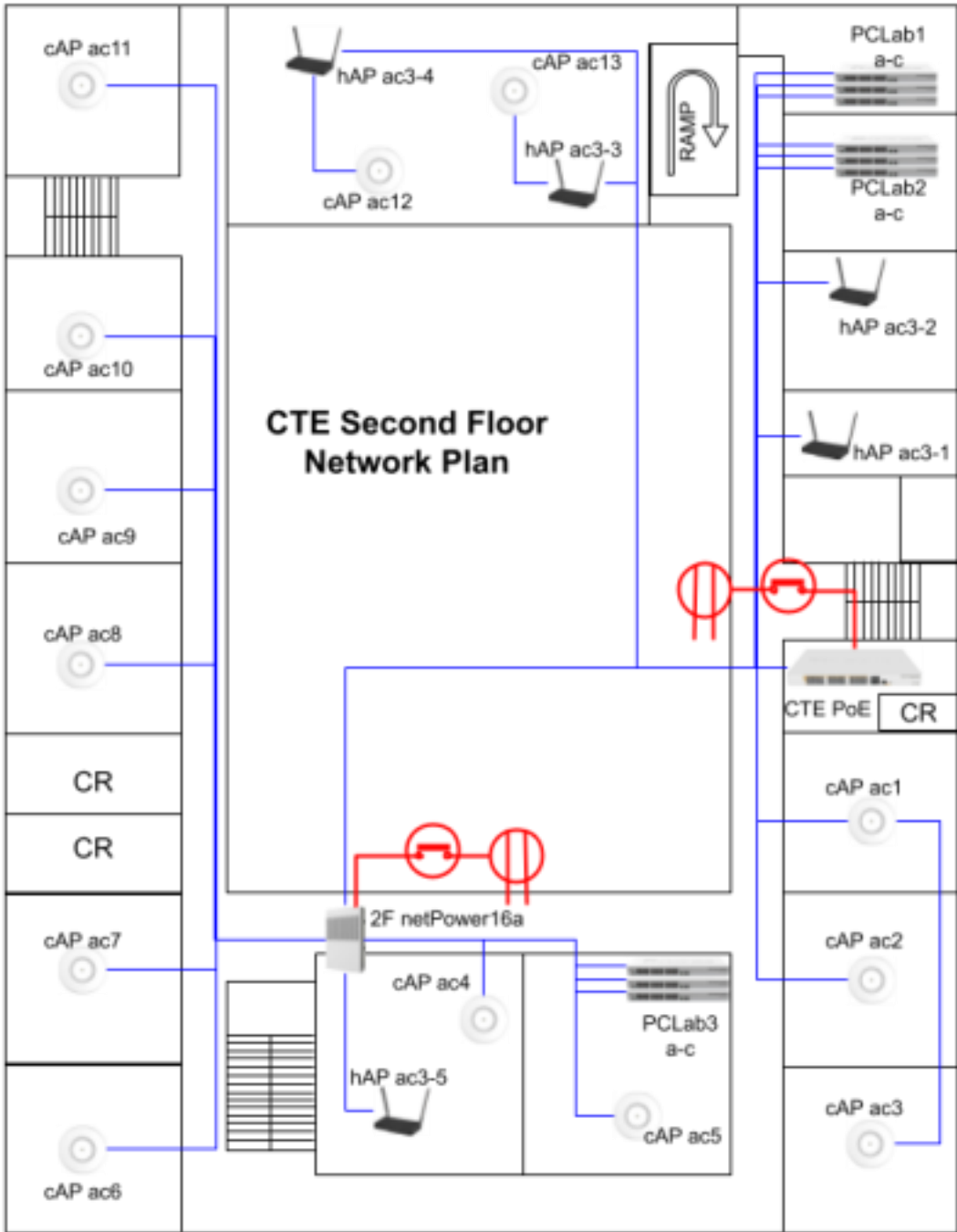


College of Public Administration & Governance

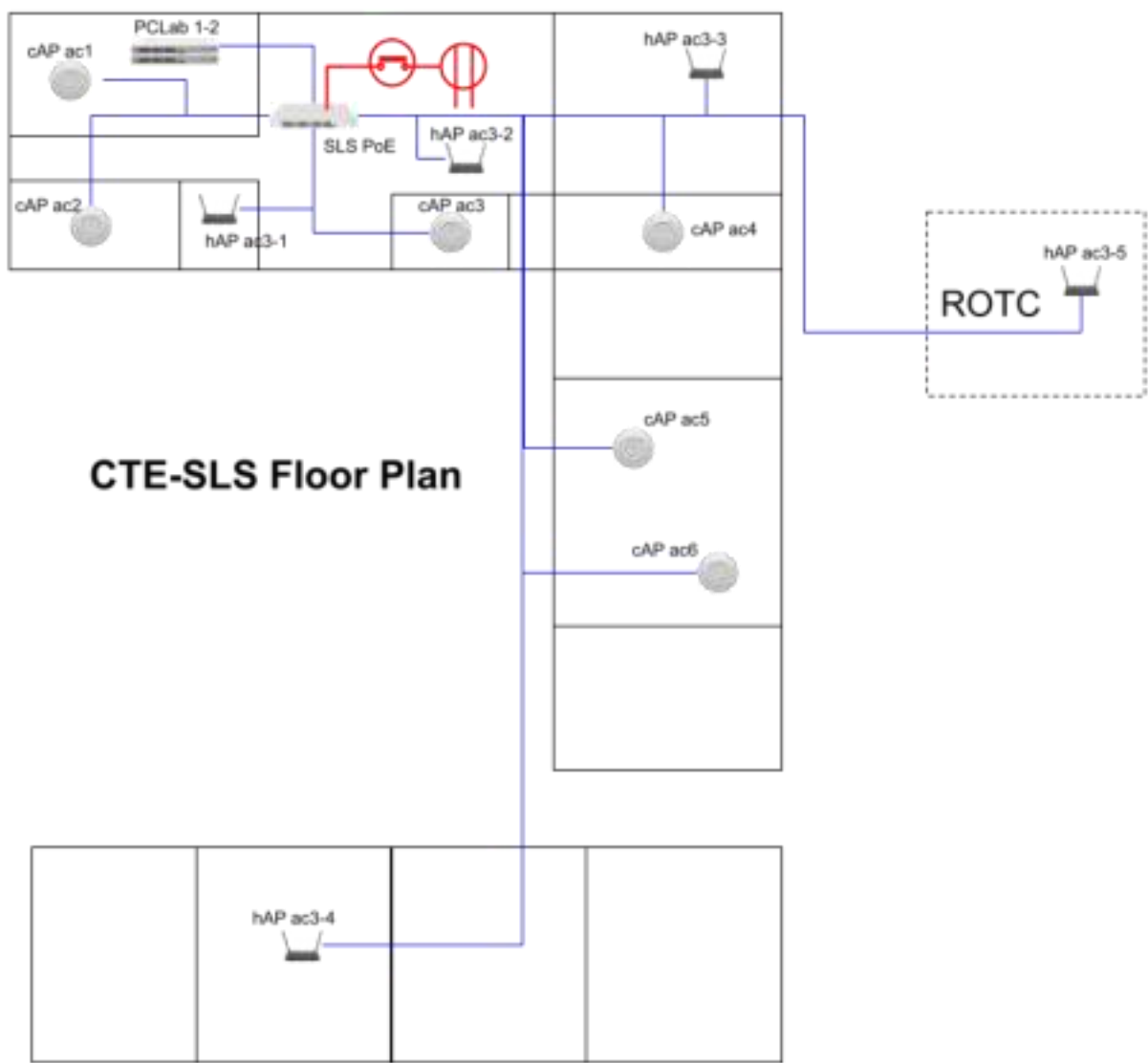


College of Teacher Education Main

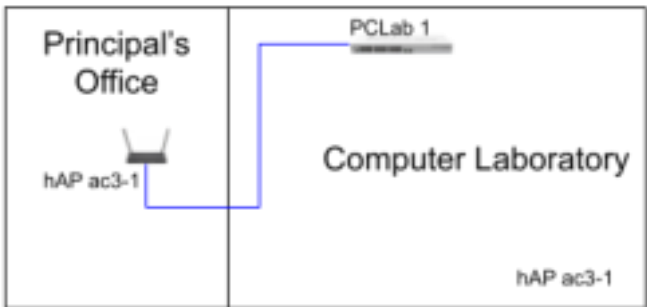




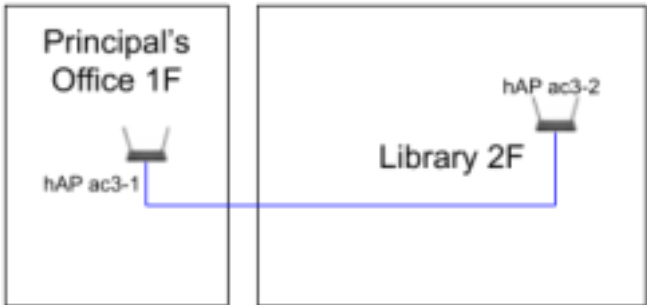
College of Teacher Education Secondary Level School



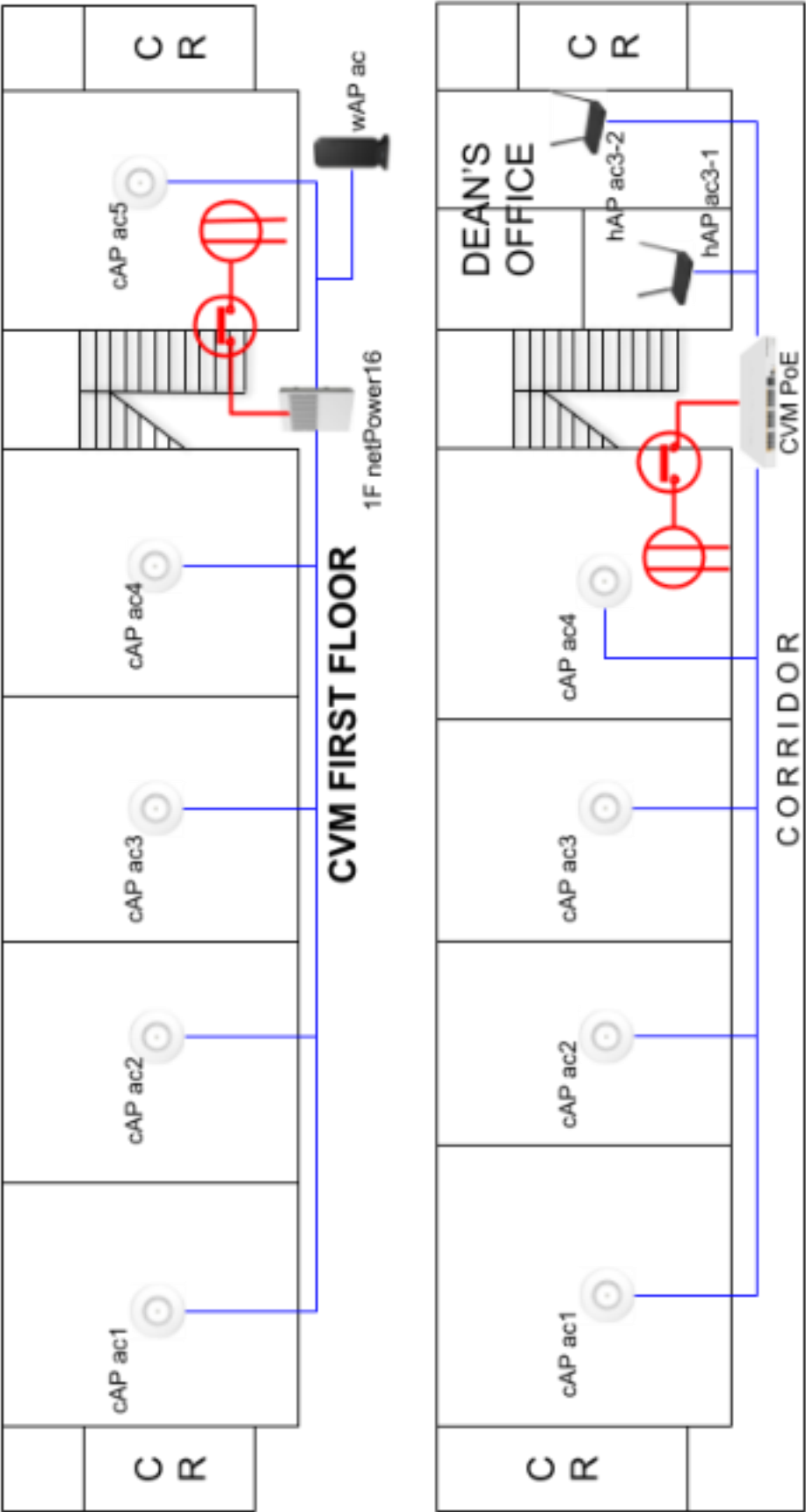
College of Teacher Education Elementary Level School

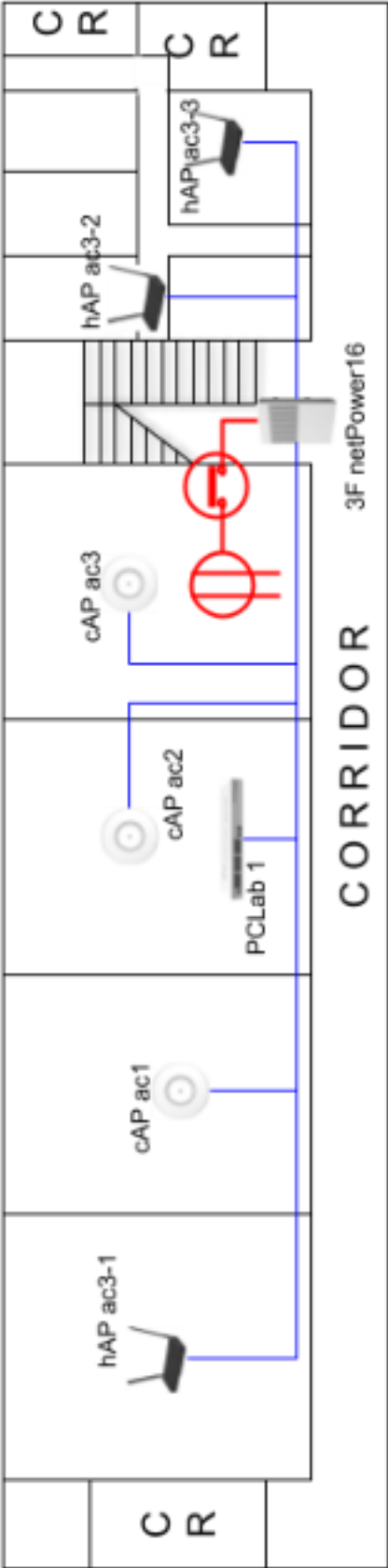


CTE-ELS Partial 1st Floor Plan

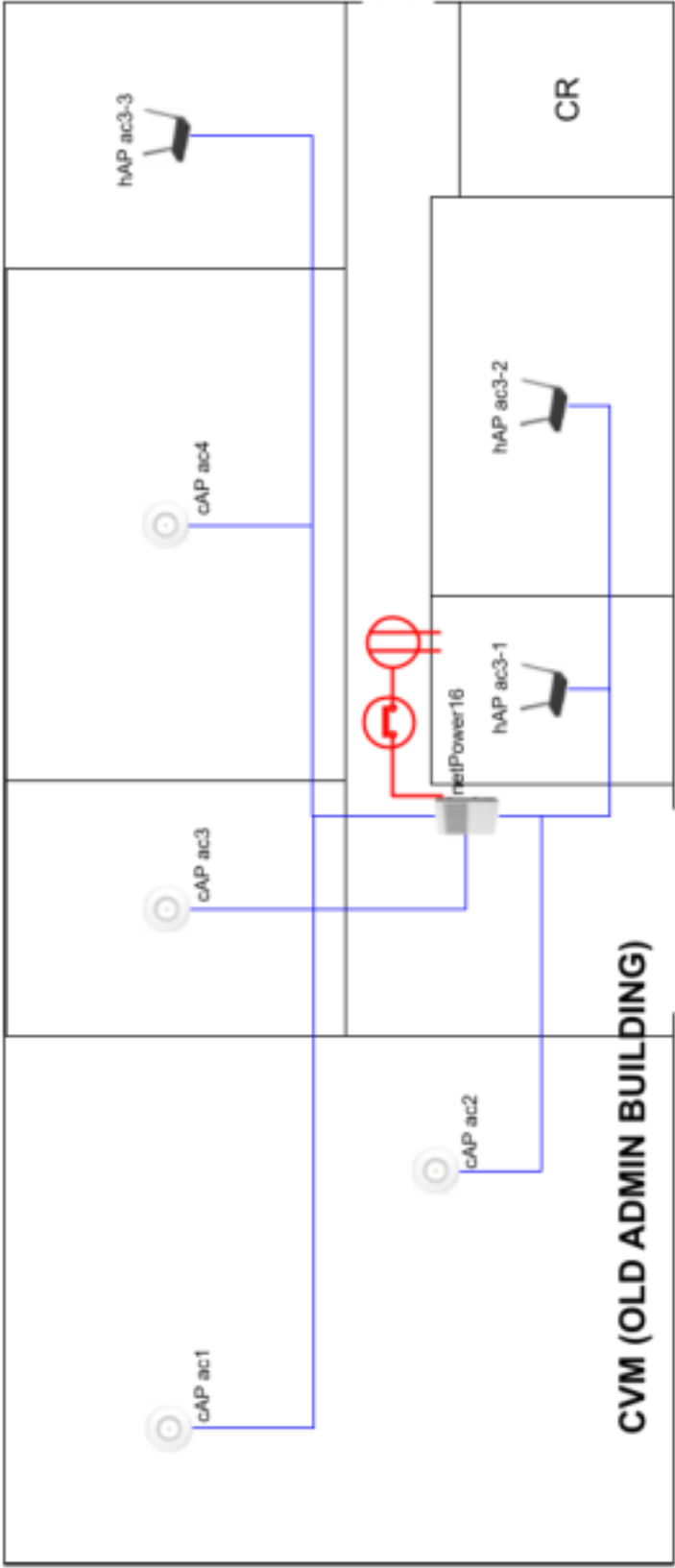


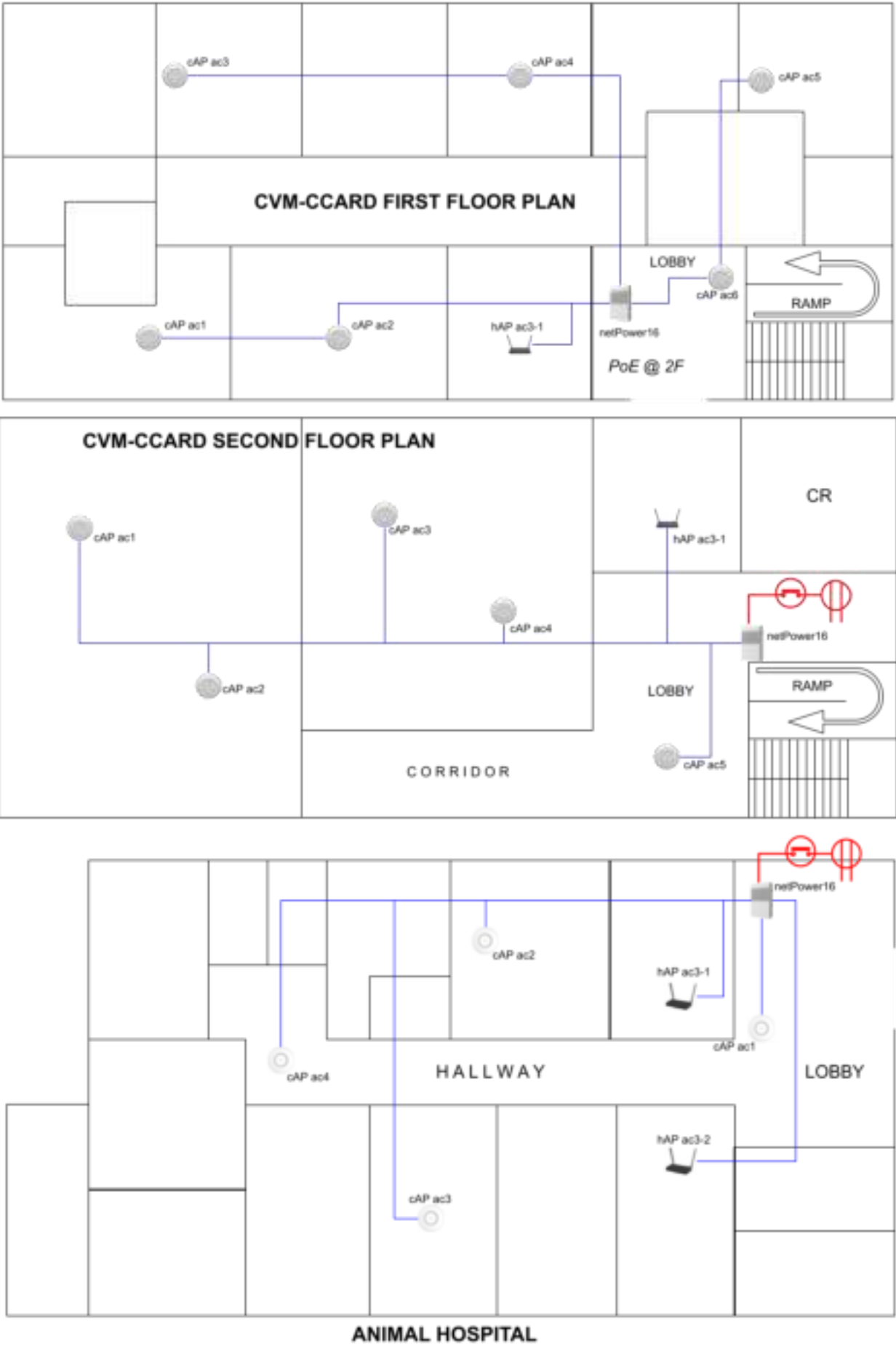
CTE-ELS Partial 2nd Floor Plan



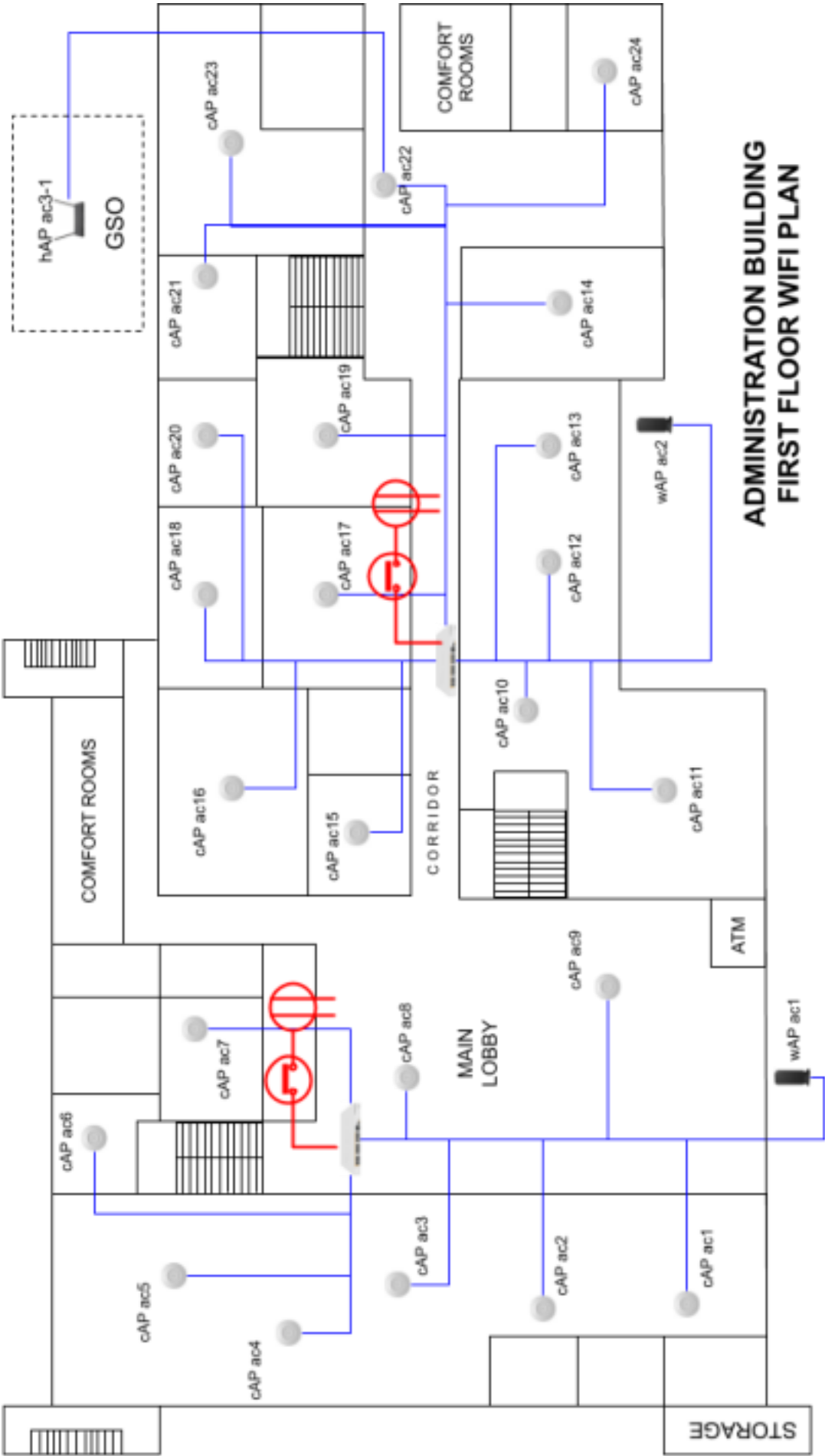


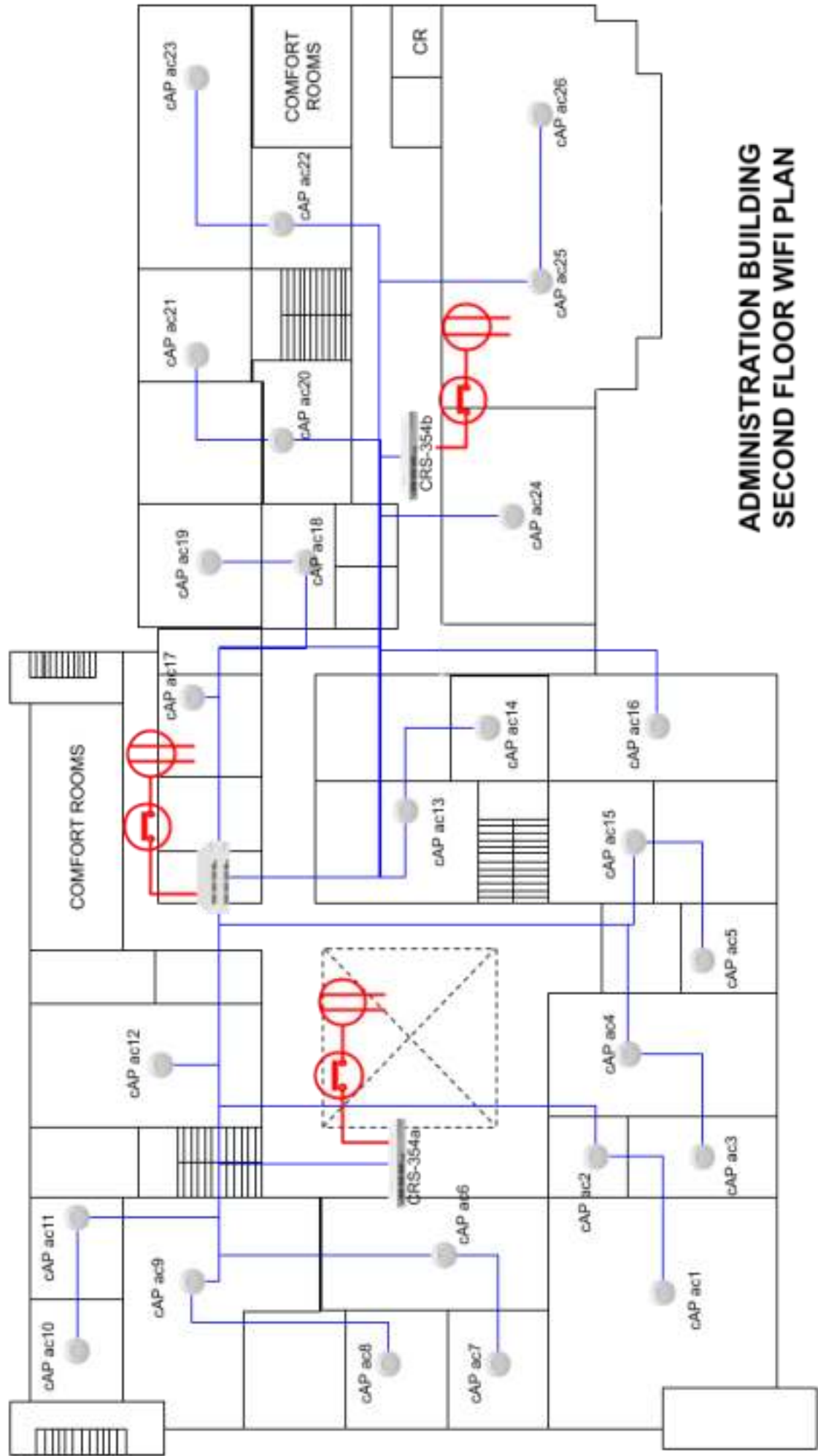
CVM THIRD FLOOR





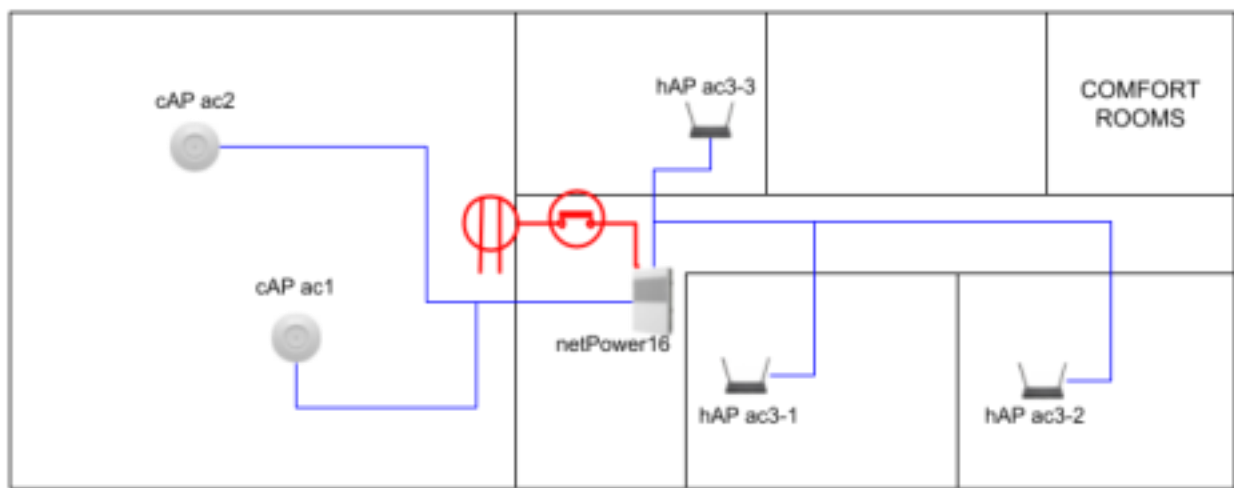
Administration Building





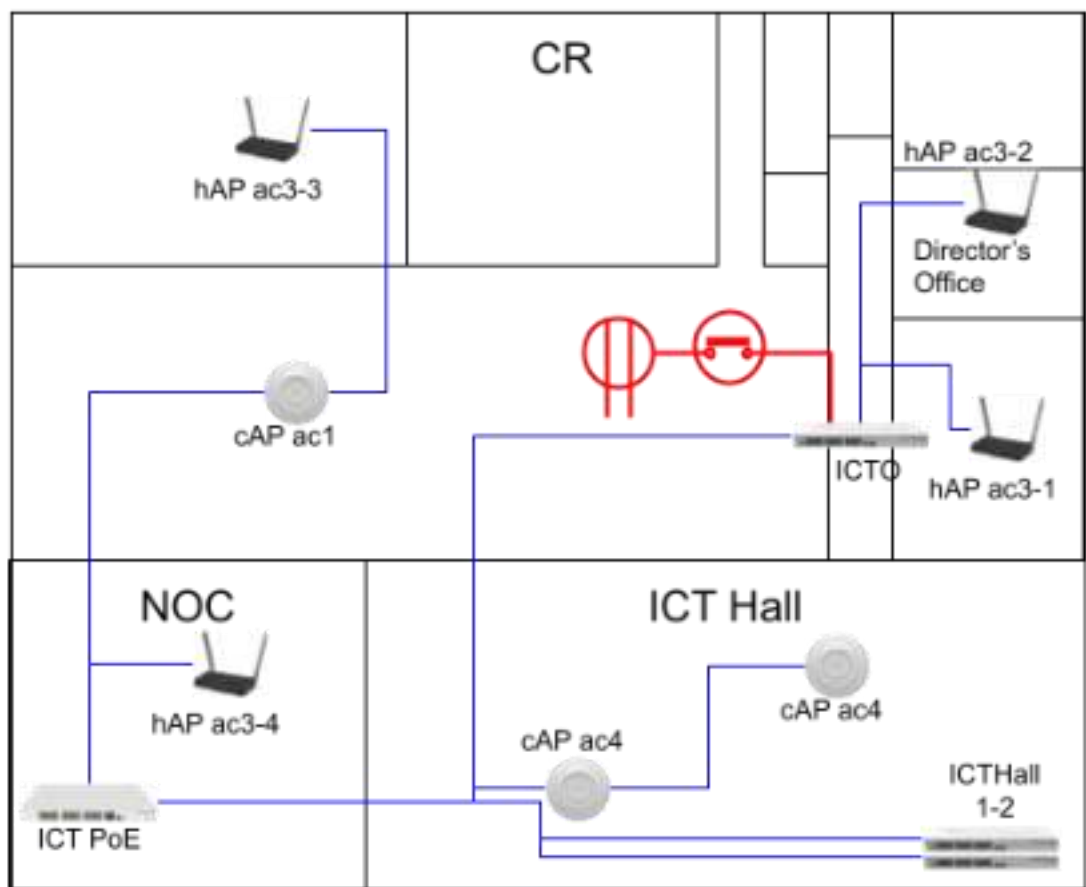
ADMINISTRATION BUILDING
SECOND FLOOR WIFI PLAN

Board of Regents Building



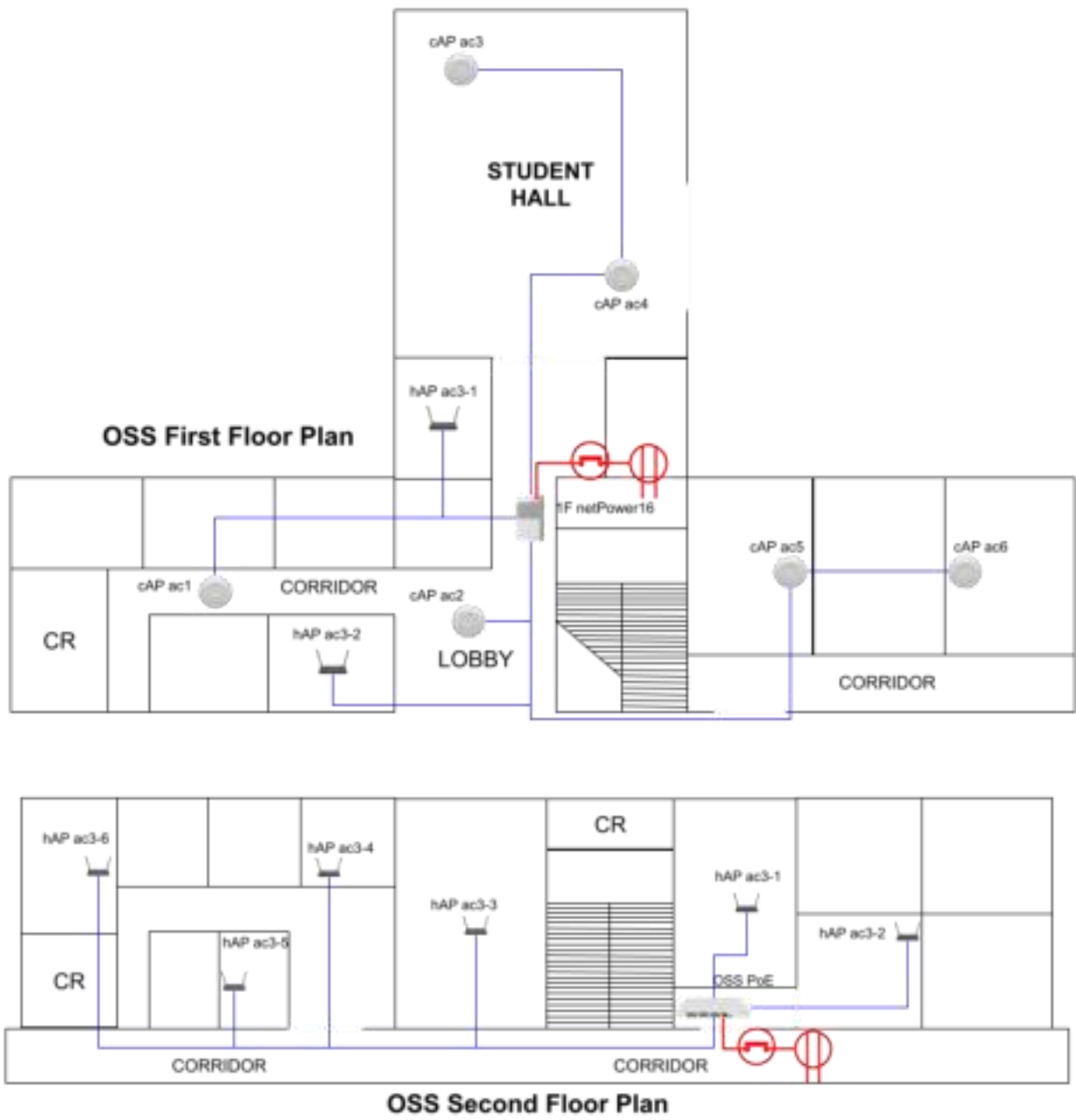
Board of Regents Building Floor Plan

ICT Office

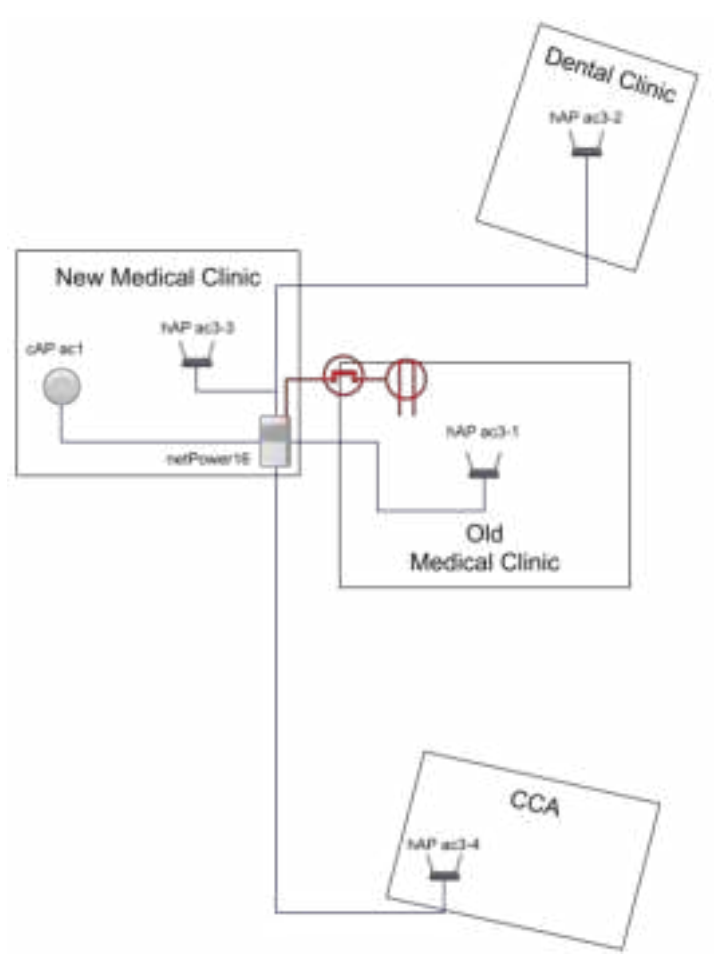


ICT Office, Library Annex First Floor

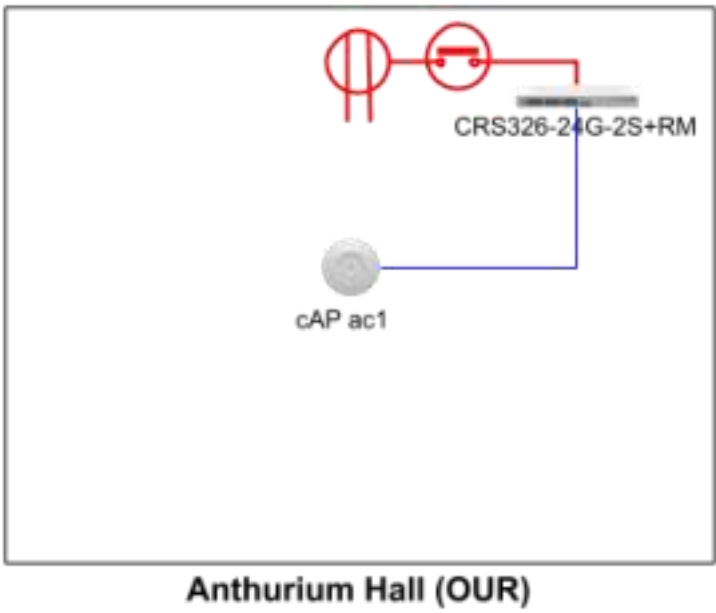
Office for Student Services



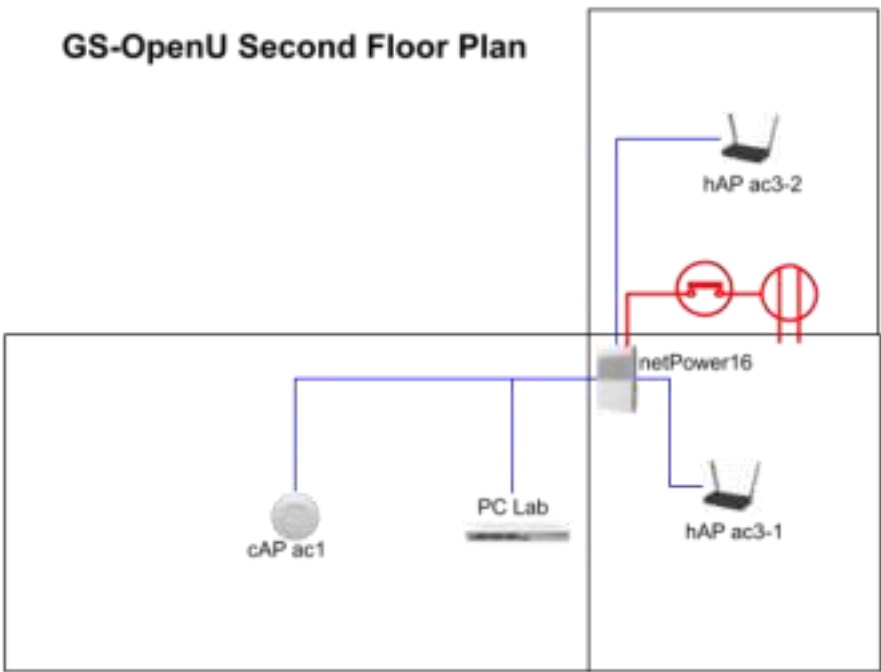
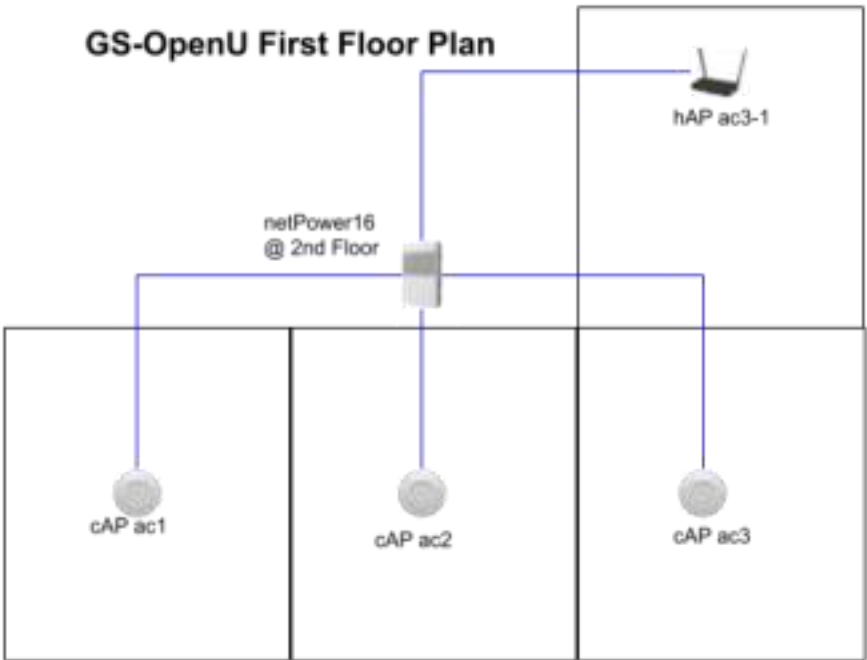
University Health Services and Center for Culture & Arts



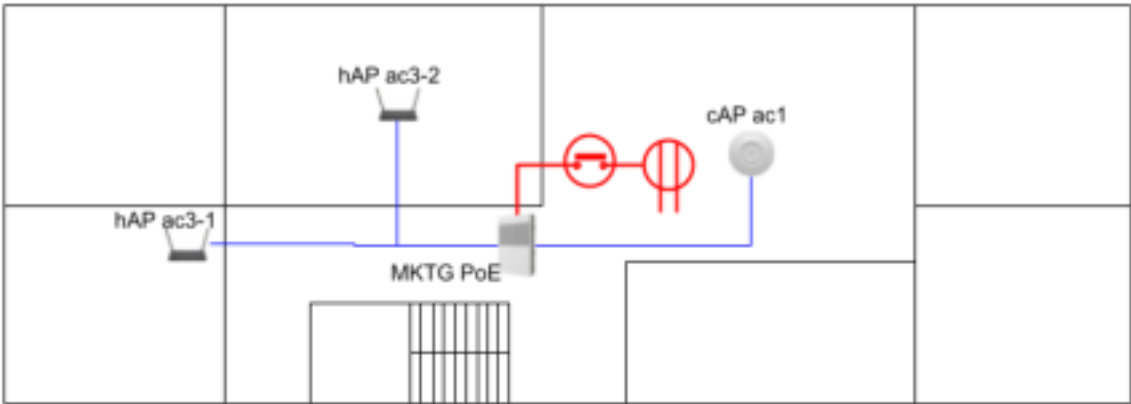
Anthurium Hall (Temporary Office of the University Registrar)



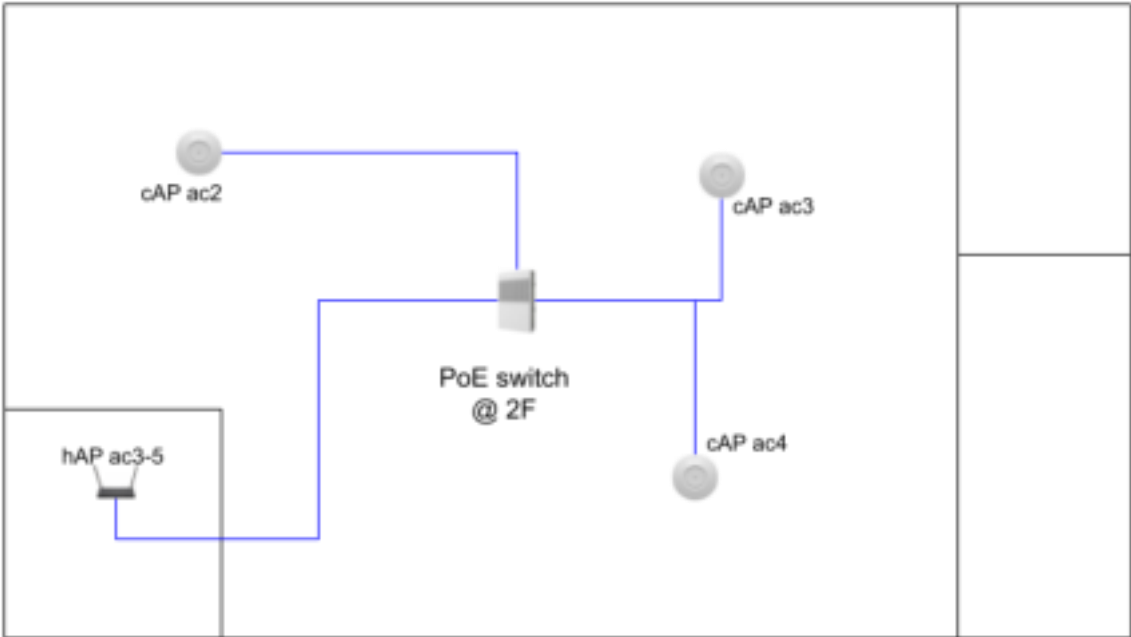
Graduate School and Open University



Marketing Center



Marketing 2nd Floor Plan



Marketing 1st Floor Plan