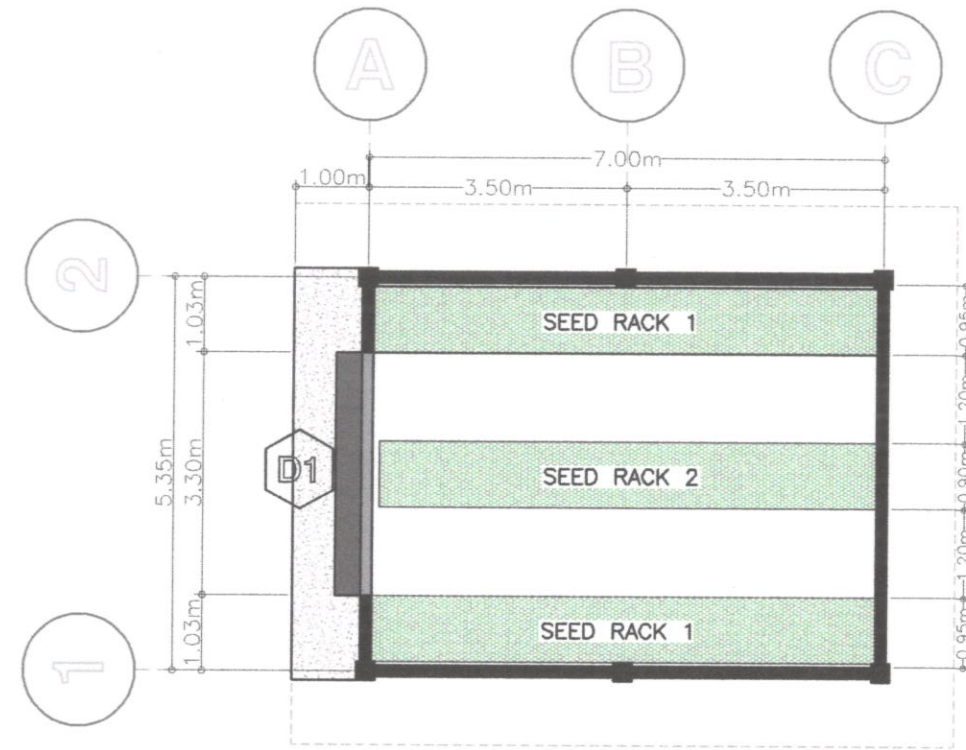




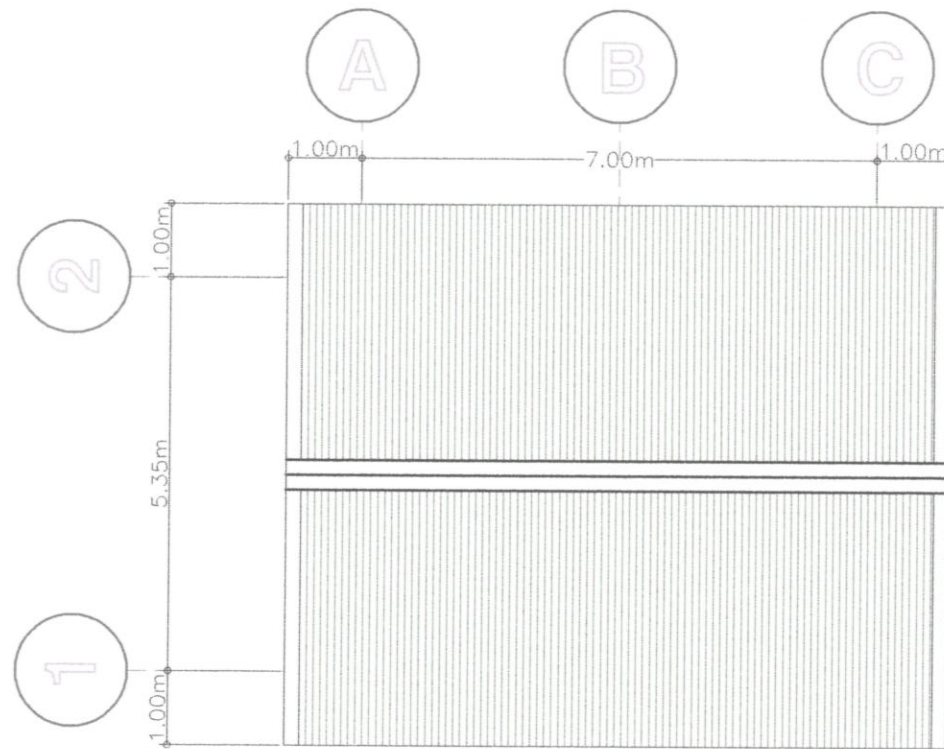
A LOCATION MAP
1 SCALE AS SHOWN



C FLOOR PLAN
1 SCALE AS SHOWN



B PROJECT PERSPECTIVE
1 SCALE AS SHOWN



D ROOF PLAN
1 SCALE AS SHOWN

PREPARED BY:
SHERINE JOHN C. LA MADRID
PRC REG. NO.: 0128359

CONCURRED BY:
Cynthia G. Kiswa
CYNTHIA G. KISWA

REPAIR AND IMPROVEMENT OF
DIFFUSED LIGHT PURPLE YAM
STORAGE
BSU LA TRINIDAD CAMPUS, KM.6, BETAG,
LA TRINIDAD, BENGUET



SUBMITTED BY:
Melvin John M. Aromin
MELVIN JOHN M. AROMIN
PDO DIRECTOR

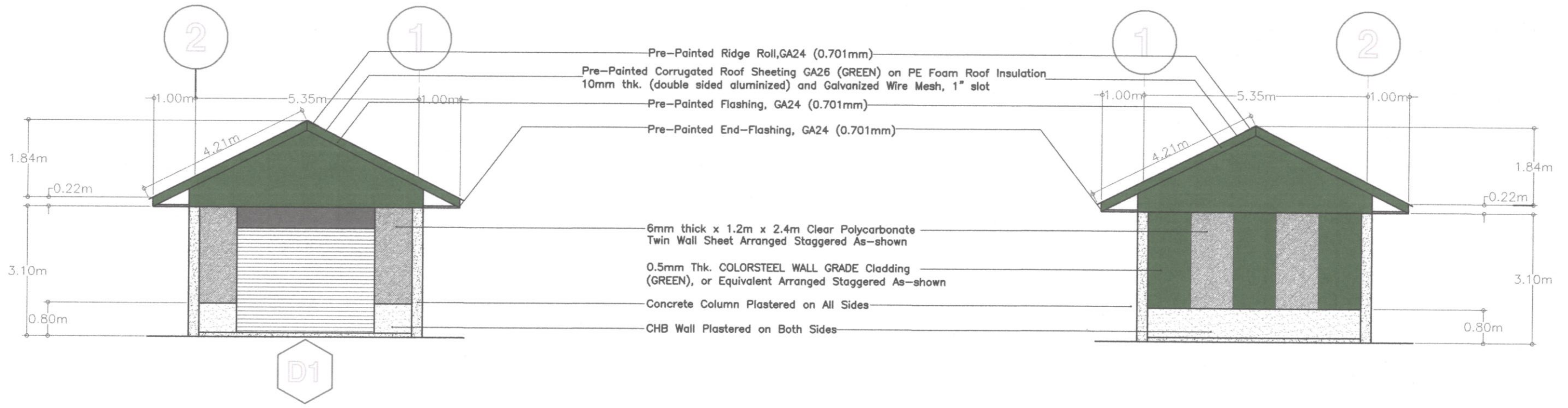
RECOMMENDED BY:
Allan C. Sacpa
ALLAN C. SACPA
VP FOR ADMIN. AND FINANCE

APPROVED BY:
Felipe Salang Comila
FELIPE SALANG COMILA
UNIVERSITY PRESIDENT

SHEET NO.
01
07

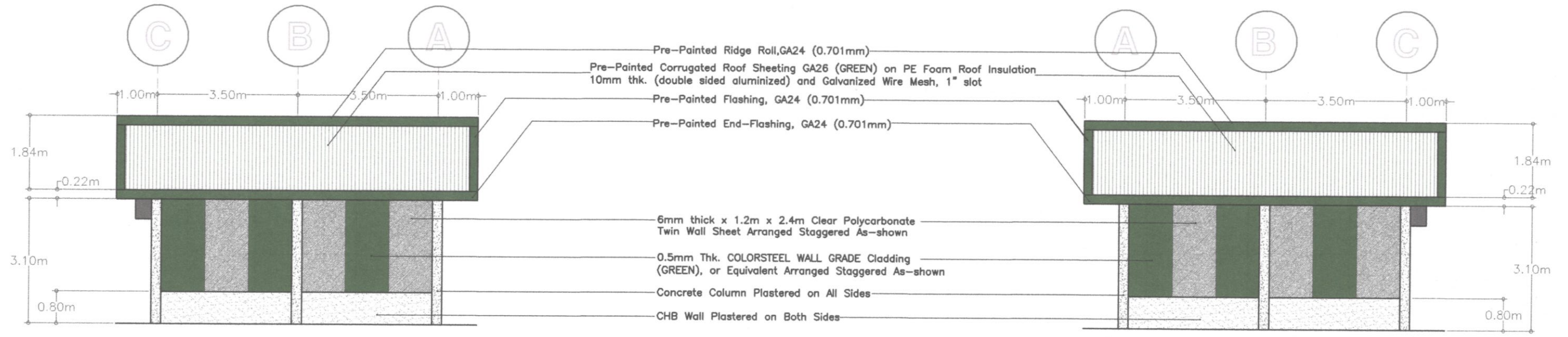
PROJECT DEVELOPMENT OFFICER III | NPRCRTC DIRECTOR / END-USER

PROJECT TITLE/ LOCATION



E FRONT ELEVATION
 2 SCALE AS SHOWN

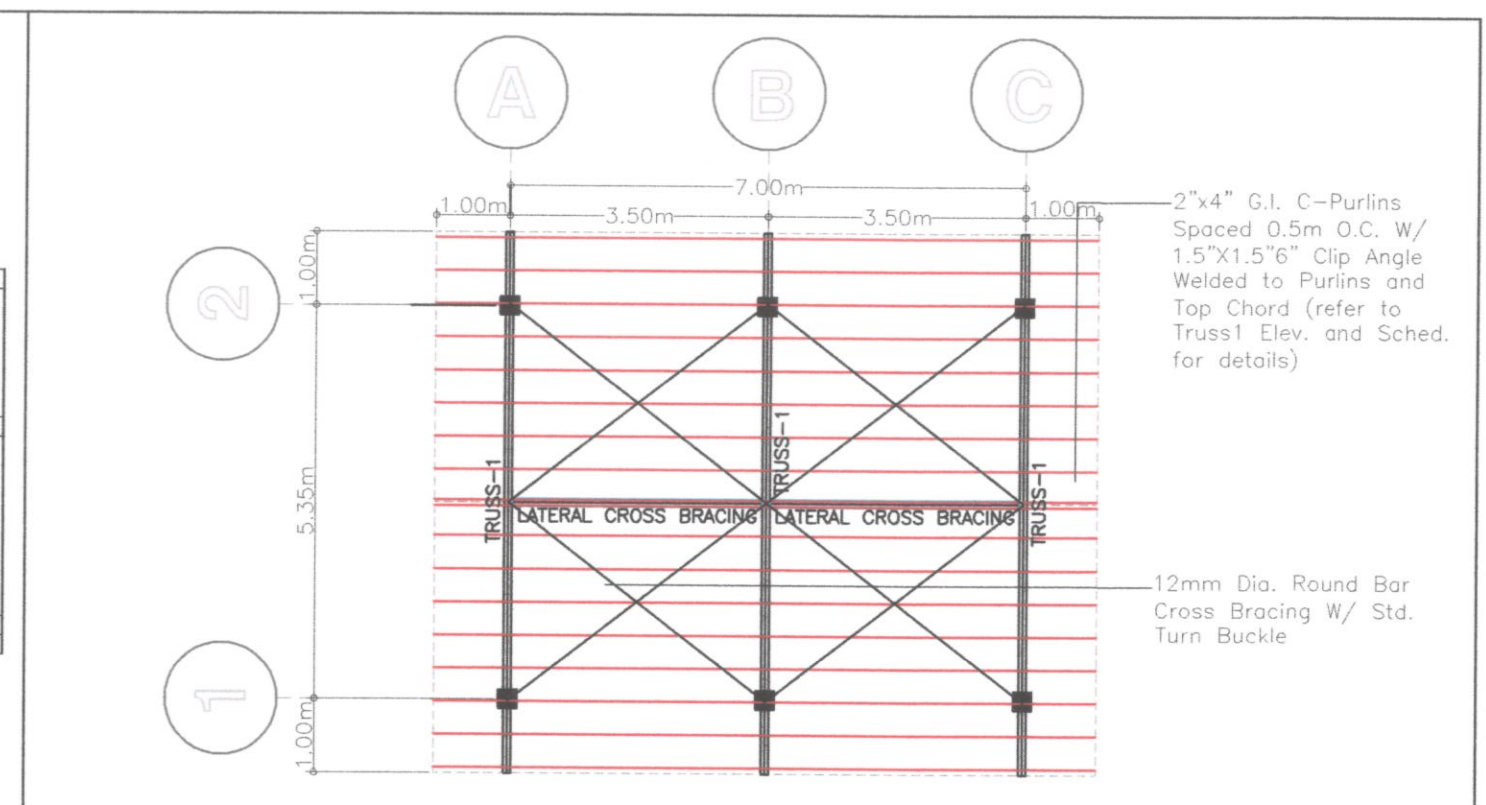
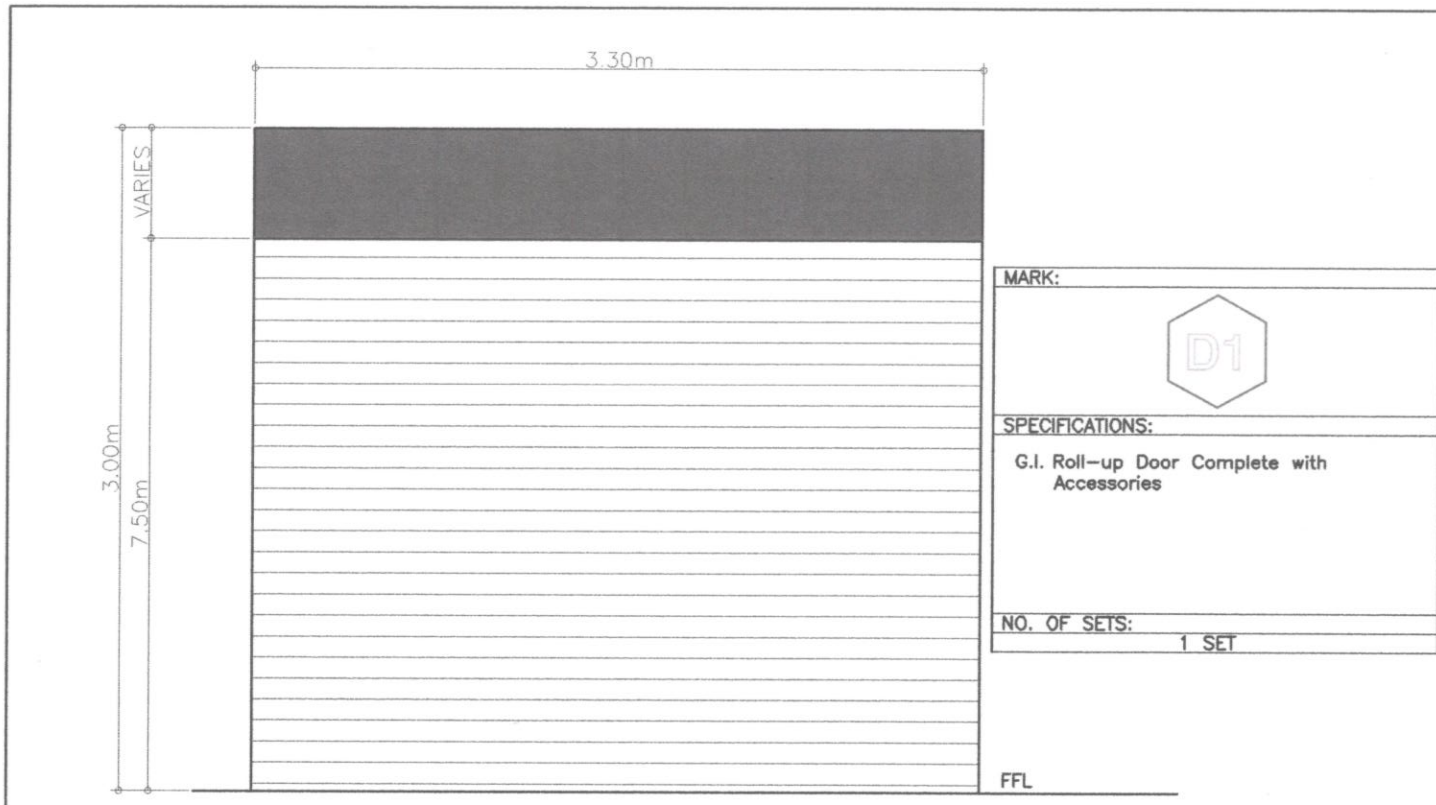
F BACK ELEVATION
 2 SCALE AS SHOWN



G LEFT SIDE ELEVATION
 2 SCALE AS SHOWN

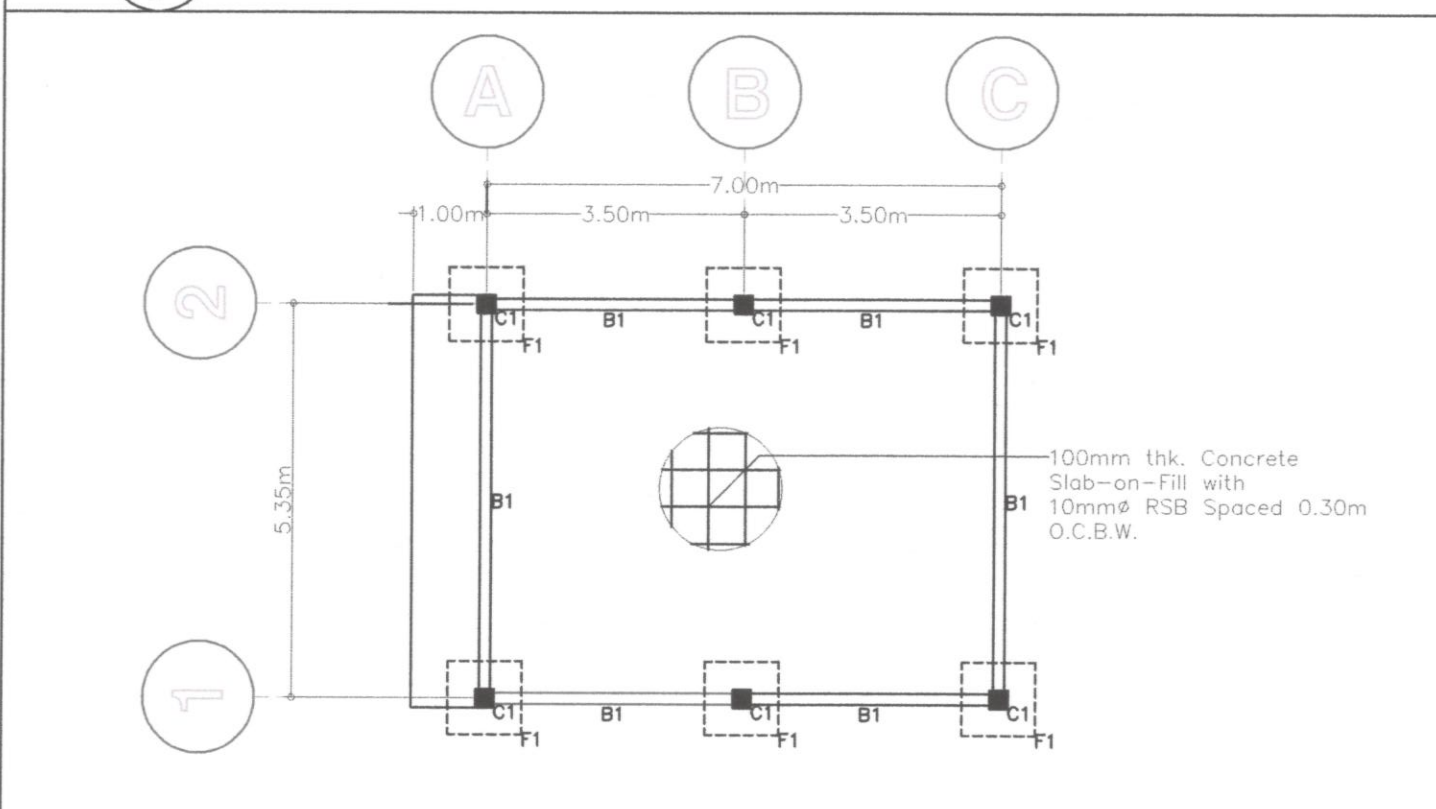
H RIGHT SIDE ELEVATION
 2 SCALE 1:100

PREPARED BY: SHERIF JOHN C. LA MADRID PRC REG. NO.: 0128359 PROJECT DEVELOPMENT OFFICER III	CONCURRED BY: CYNTHIA G. KISWA NPRCRT DIRECTOR / END-USER	REPAIR AND IMPROVEMENT OF DIFFUSED LIGHT PURPLE YAM STORAGE BSU LA TRINIDAD CAMPUS, KM.6, BETAG, LA TRINIDAD, BENGUET PROJECT TITLE/ LOCATION	 BENGUET STATE UNIVERSITY	SUBMITTED BY: MELVIN JOHN M. AROMIN PDO DIRECTOR	RECOMMENDED BY: ALLAN C. SACPA VP FOR ADMIN. AND FINANCE	APPROVED BY: FELIPE SALANG COMILA UNIVERSITY PRESIDENT	SHEET NO. 02 07
--	---	--	---	--	--	--	-----------------------

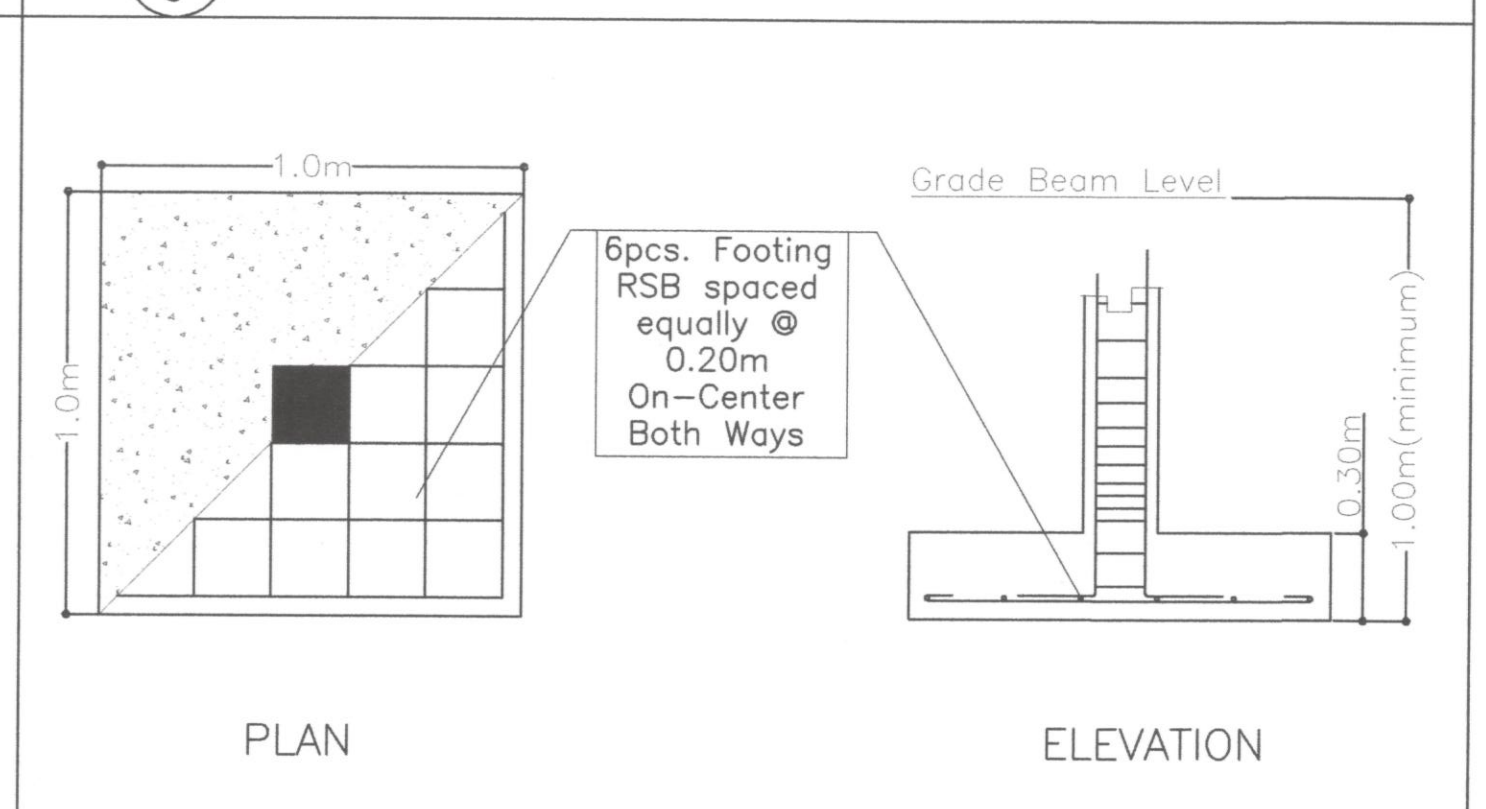


I DOOR DETAILS (D1)
3 SCALE AS SHOWN

K FRAMING PLAN @ TOP CHORD LEVEL
3 SCALE AS SHOWN

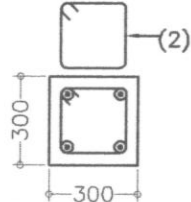
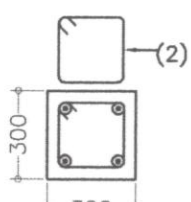


J FOOTING LAYOUT
3 SCALE AS SHOWN



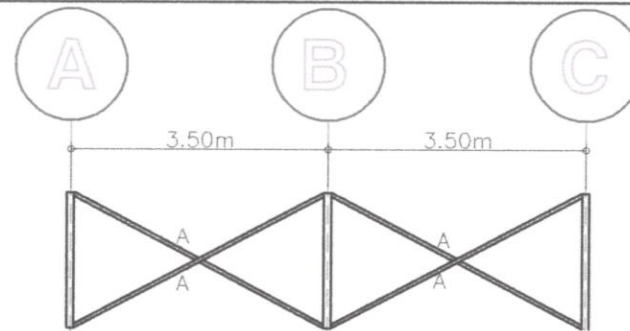
L FRAMING PLAN @ TOP CHORD LEVEL
3 SCALE AS SHOWN

PREPARED BY: SHERIF JOHN C. LA MADRID PRC REG. NO.: 0128359 PROJECT DEVELOPMENT OFFICER III	CONCURRED BY: CYNTHIA G. KISWA NPRCRT DIRECTOR / END-USER	REPAIR AND IMPROVEMENT OF DIFFUSED LIGHT PURPLE YAM STORAGE BSU LA TRINIDAD CAMPUS, KM.6, BETAG, LA TRINIDAD, BENGUET PROJECT TITLE/ LOCATION	 BENGUET STATE UNIVERSITY 1916	SUBMITTED BY: MELVIN JOHN M. AROMIN PDO DIRECTOR	RECOMMENDED BY: ALLAN C. SACPA VP FOR ADMIN. AND FINANCE	APPROVED BY: FELIPE SALANG COMILA UNIVERSITY PRESIDENT	SHEET NO. 03 07
--	---	--	---	--	--	--	-----------------------

SCHEDULE OF COLUMNS	
4.0M TO 1.0M	C21 : Fy276, Cover=40mm TIES: 10mm ϕ RSB 4 pcs. (2) @ 75mm c/c, REST (2) @ 200 to MIDHEIGHT  MAIN BAR: 4 PCS. - 16mm ϕ RSB
1.0M TO 0.0M	C21 : Fy276, Cover=40mm TIES: 10mm ϕ RSB 4 pcs. (2) @ 75mm c/c, REST (2) @ 100 to MIDHEIGHT  MAIN BAR: 4 PCS. - 16mm ϕ RSB
COLUMN MARK	C1

SCHEDULE OF BEAMS										
Beam Mark	Beam Dimensions (mm)		Reinforcing Bars						STIRRUPS 10mm ϕ RSB (Unless Noted Otherwise)	
			Rebar Size	Left Support		Midspan		Right Support		
	b	h		Top	Bottom	Top	Bottom	Top		
B1	250	300	16mm ϕ	2	2	2	2	2	2	6pcs. @ 100mm, Rest @ 200mm TO MIDLENGTH

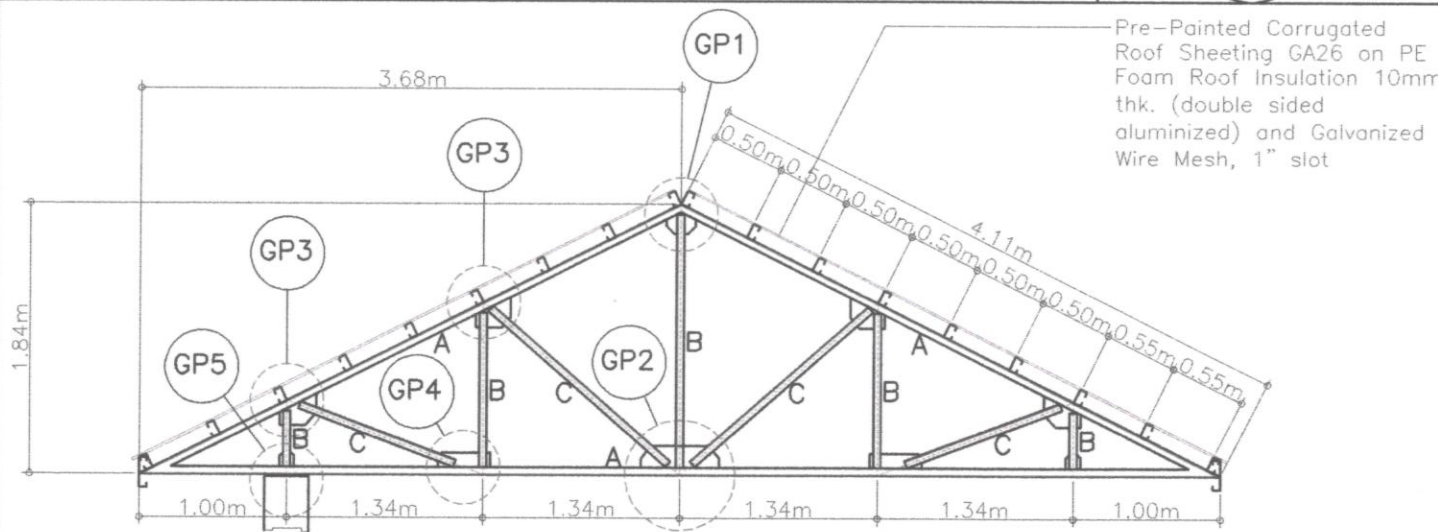
N BEAM SCHEDULE
4 SCALE AS SHOWN



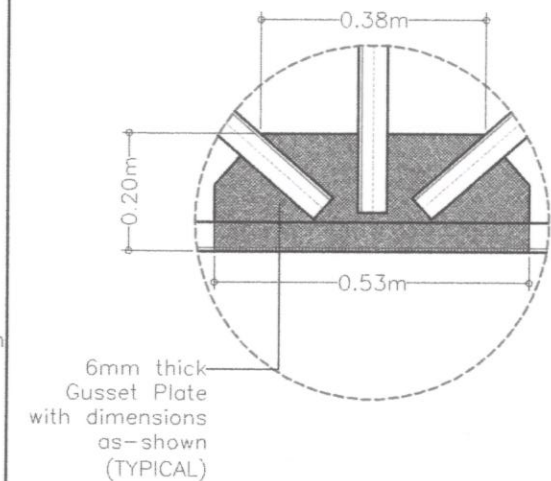
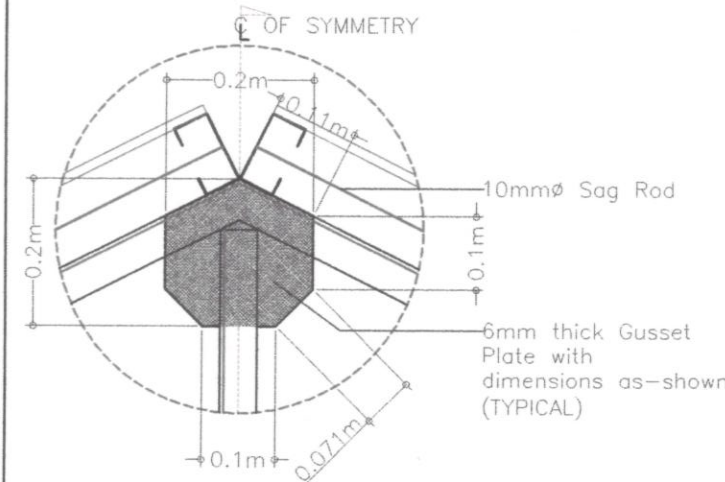
SCHEDULE OF TRUSSES MEMBERS AND WELDS					
NAME	SIZE		WELDS		
	TRUSS MEMBERS, mm	THICKNESS, mm	LENGTH		
			L1	L2	L3
A	1Z-38X38X6 (A)	6	FULL WELD ON TRUSSES		

M COLUMN SCHEDULE
4 SCALE AS SHOWN

N LATERAL CROSS BRACING ELEVATION AND SCHEDULE
4 SCALE AS SHOWN



SCHEDULE OF TRUSSES MEMBERS AND WELDS					
NAME	SIZE		WELDS		
	TRUSS MEMBERS, mm	THICKNESS, mm	LENGTH		
			L1	L2	L3
A	2Z-38X38X6 (A) (TOP/BOTTOM CHORDS)	6	FULL WELD		
B	2Z-38X38X6 (B)	6	FULL WELD		
C	2Z-38X38X6 (C)	6	FULL WELD		

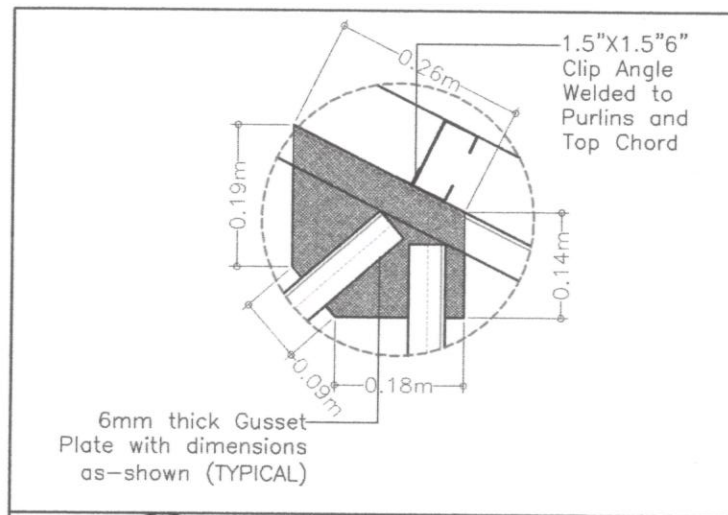


O TRUSS-1 ELEVATION AND SCHEDULE
4 SCALE AS SHOWN

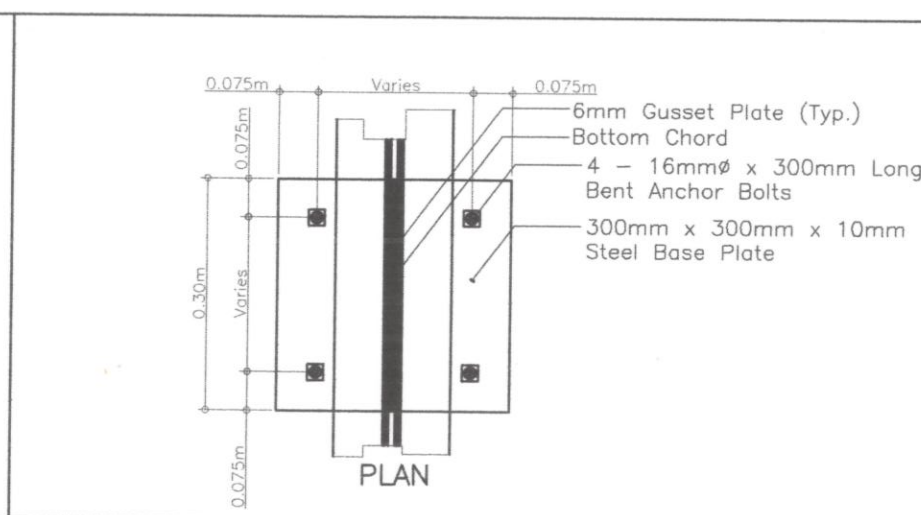
P GP1 DETAILS
4 SCALE AS SHOWN

Q GP2 DETAILS
4 SCALE AS SHOWN

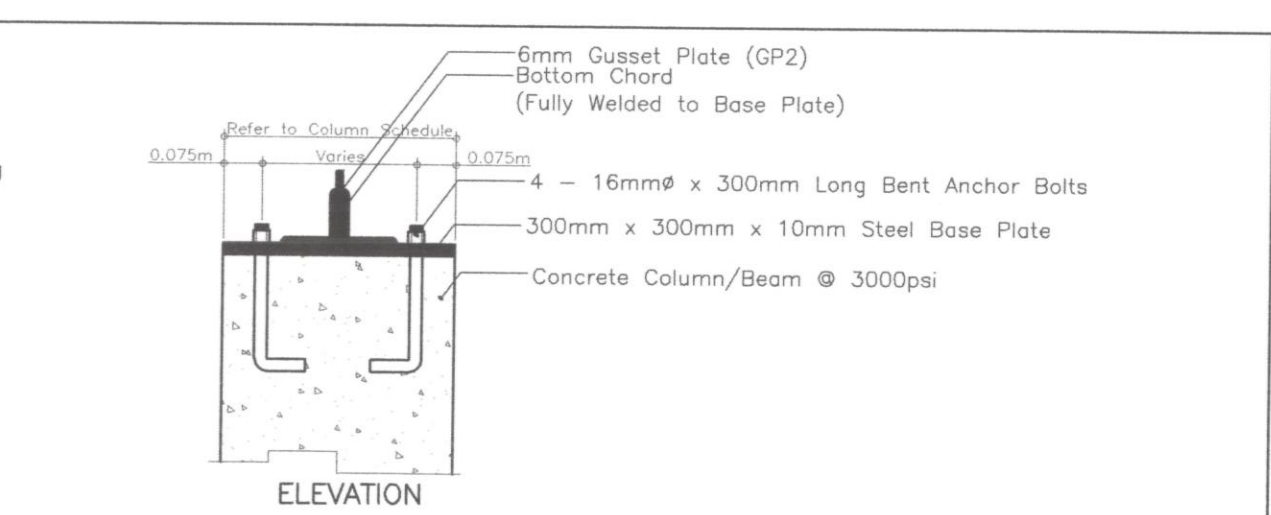
PREPARED BY:  SHERIF JOHN C. LA MADRID PRC REG. NO.: 0128359 PROJECT DEVELOPMENT OFFICER III	CONCURRED BY:  CYNTHIA G. KISWA NPRCRTC DIRECTOR / END-USER	REPAIR AND IMPROVEMENT OF DIFFUSED LIGHT PURPLE YAM STORAGE BSU LA TRINIDAD CAMPUS, KM.6, BETAG, LA TRINIDAD, BENGUET PROJECT TITLE/ LOCATION	 BENGUET STATE UNIVERSITY	SUBMITTED BY:  MELVIN JOHN M. AROMIN PDO DIRECTOR	RECOMMENDED BY:  ALLAN C. SACPA VP FOR ADMIN. AND FINANCE	APPROVED BY:  FEYPE SALANG COMILA UNIVERSITY PRESIDENT	SHEET NO. 04 07
---	---	--	---	---	---	--	-----------------------



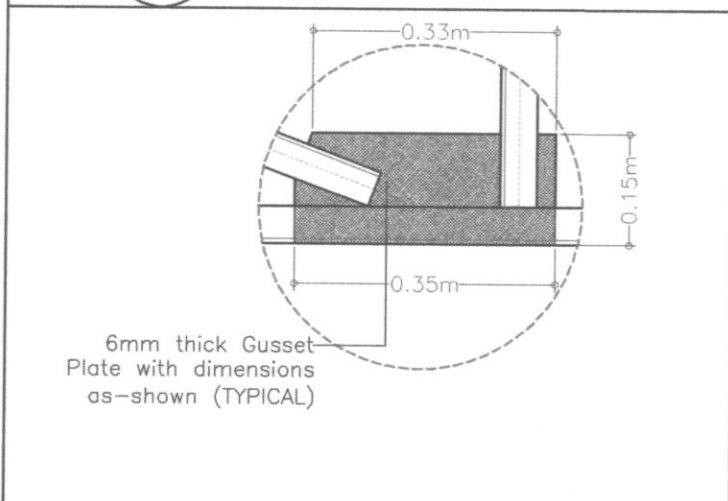
R
5
GP3 DETAILS
SCALE AS SHOWN



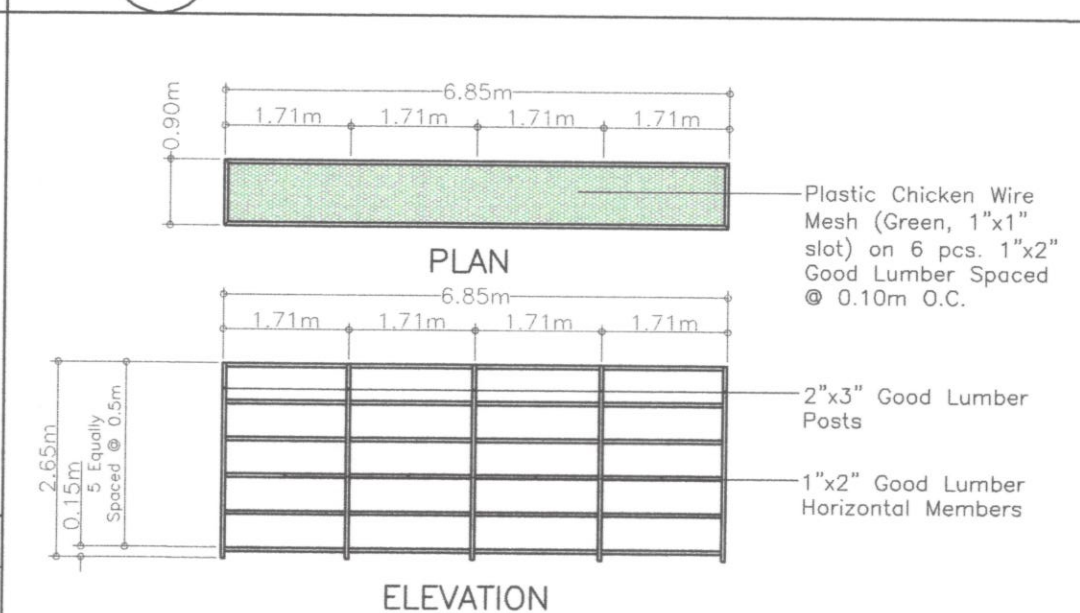
U
5
TRUSS ANCHORAGE DETAILS
SCALE AS SHOWN



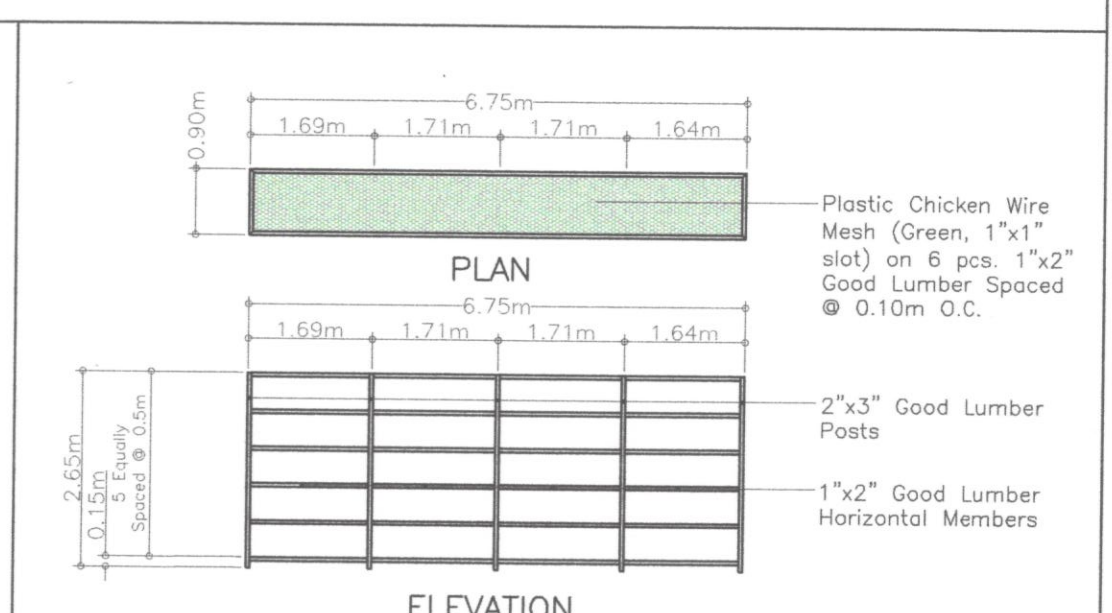
W
5
TRUSS ANCHORAGE DETAILS
SCALE AS SHOWN



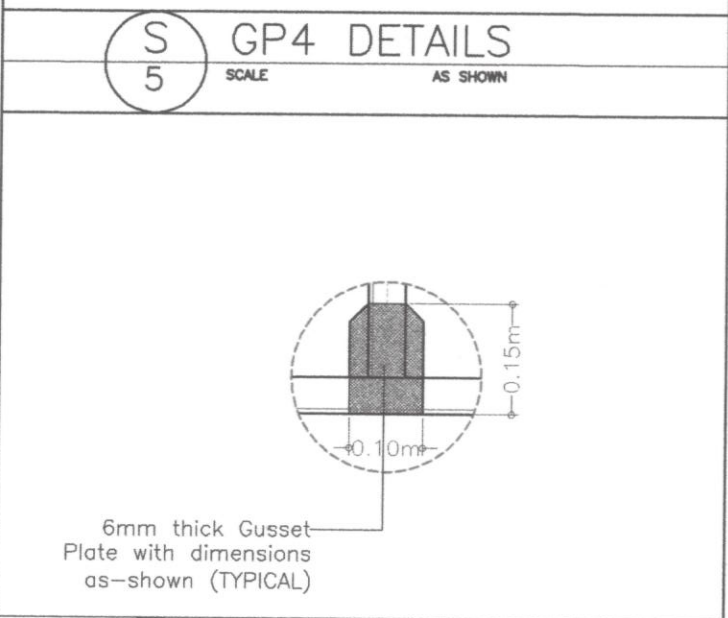
S
5
GP4 DETAILS
SCALE AS SHOWN



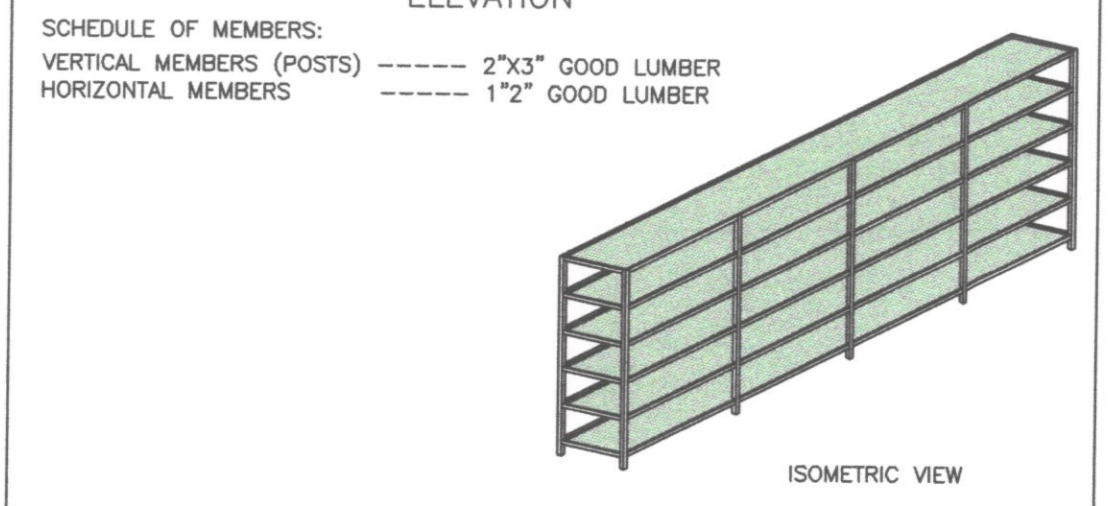
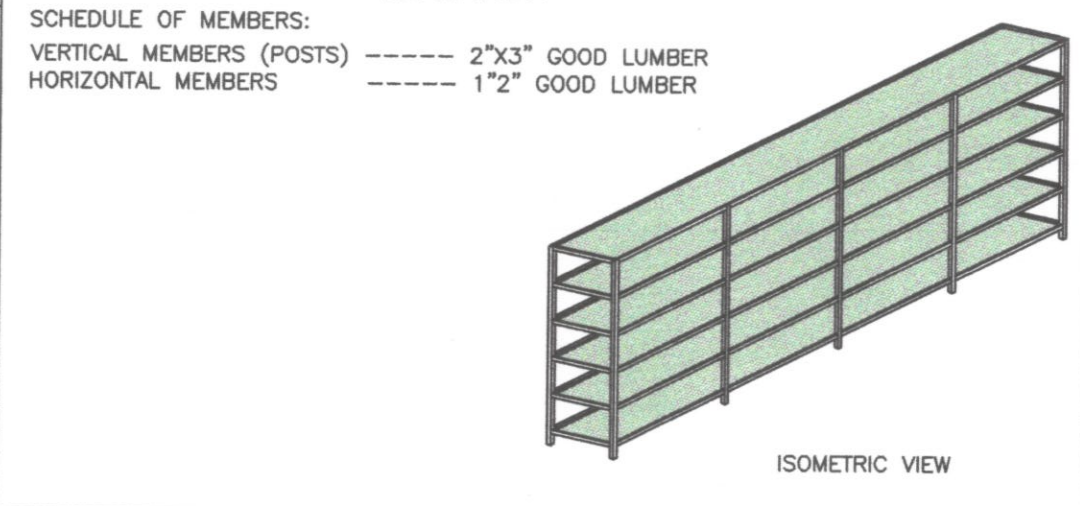
V
5
SEED RACK 1 DETAILS
SCALE AS SHOWN



W
5
SEED RACK 2 DETAILS
SCALE AS SHOWN



T
5
GP5 DETAILS
SCALE AS SHOWN



PREPARED BY:
SHERIFF JOHN C. LA MADRID
PRC REG. NO.: 0128359
PROJECT DEVELOPMENT OFFICER III

CONCURRED BY:
CYNTHIA G. KISWA
NPRCRTC DIRECTOR / END-USER

REPAIR AND IMPROVEMENT OF
DIFFUSED LIGHT PURPLE YAM
STORAGE
BSU LA TRINIDAD CAMPUS, KM.6, BETAG,
LA TRINIDAD, BENGUET
PROJECT TITLE/ LOCATION

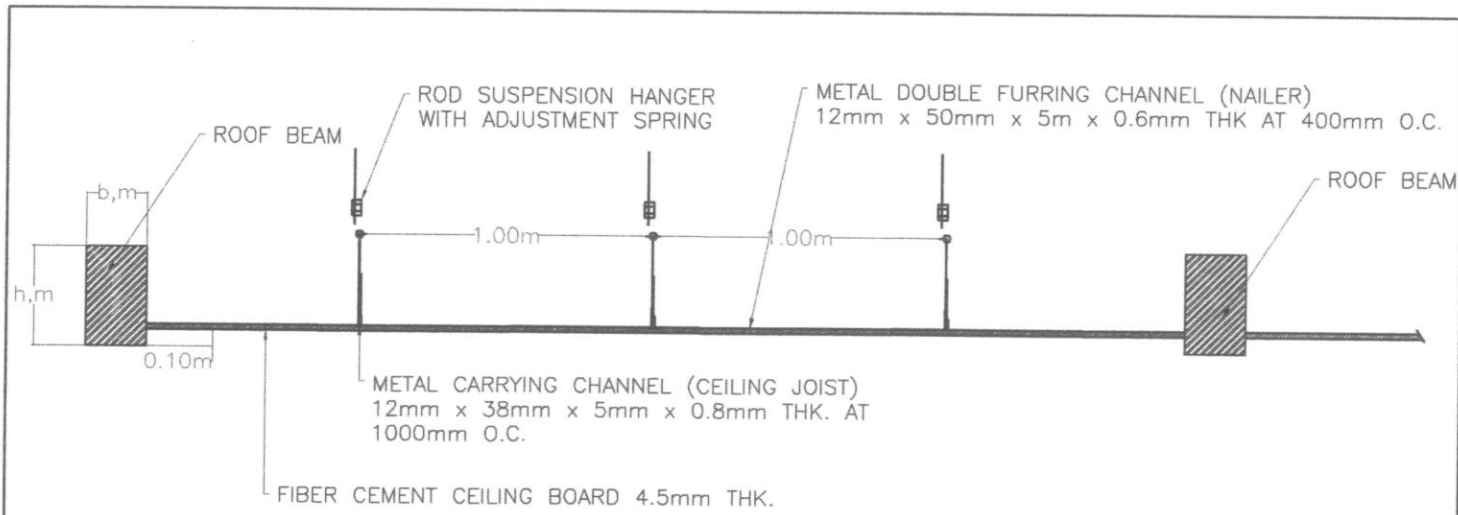


SUBMITTED BY:
MELVIN JOHN M. AROMIN
PDO DIRECTOR

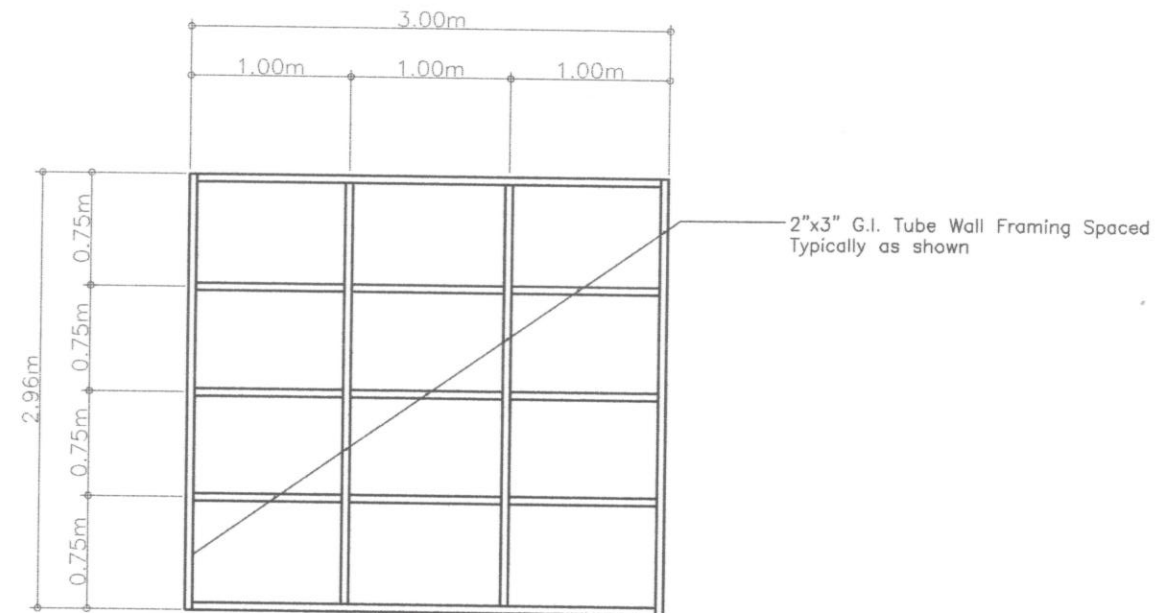
RECOMMENDED BY:
ALLAN C. SACPA
VP FOR ADMIN. AND FINANCE

APPROVED BY:
FELPE SALAING COMILA
UNIVERSITY PRESIDENT

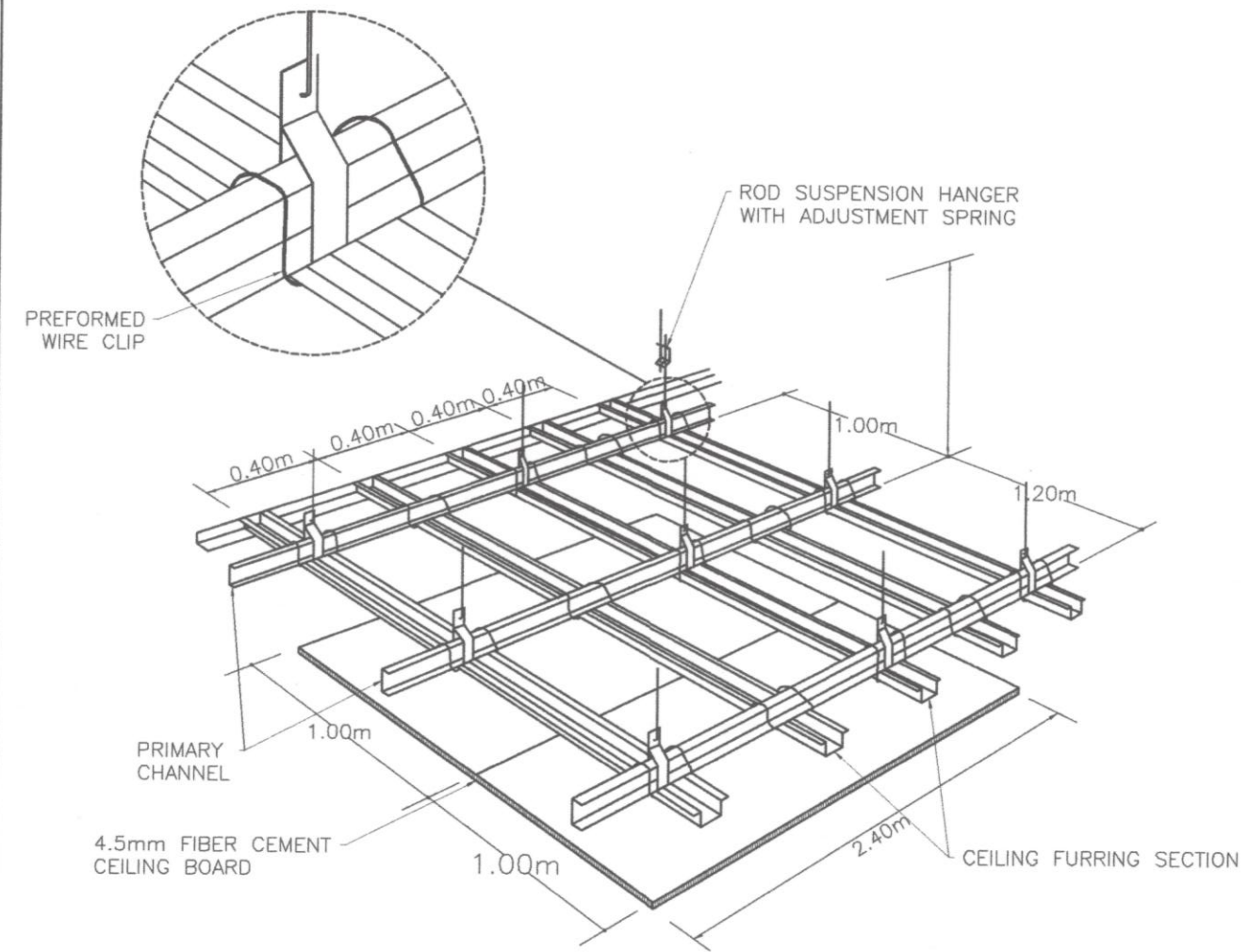
SHEET NO.
05
07



X CEILING PERSPECTIVE
SCALE AS SHOWN



Z TYPICAL WALL FRAMING DETAILS
SCALE AS SHOWN



Y CEILING PERSPECTIVE
SCALE AS SHOWN






Power supply	Outdoor unit	1 Phase / 220-230V / 60Hz	
Cooling Capacity ^{1,2} Rated (Min. - Max.)	kW	12.5 (5.7-14.0)	
	Btu/h	42,700 (19,500-47,800)	
Power consumption	Cooling	kW	4.48
COP		W/W	2.79
CSPF		Wh/Wh	4.67
Indoor unit	Colour		
Airflow rate (H / M / L)	m ³ /min	28 / 26 / 24	
	cfm	988 / 918 / 847	
Sound pressure level ³ (H / M / L)	dB(A)	51 / 48 / 46	
	Dimensions (HxWxD)	mm	1,850x600x360
Machine weight	kg	50	
Certified Operation range	°CWB	14 to 25	
Outdoor unit	Colour	Ivory white	
Coil	Type	Micro channel	
Compressor	Type	Hermetically sealed swing type	
	Motor output	kW	2.40
Refrigerant charge (R32)	kg	1.9 (Charged for 30 m)	
Sound pressure level ³	Cooling	dB(A)	52 / 54
	Night quiet mode	dB(A)	45
Dimensions (HxWxD)	mm	990x940x320	
Machine weight	kg	64	
Certified Operation range	°CDB	21 to 46	
Piping connections	Liquid (Flare)	mm	φ9.5
	Gas (Flare)	mm	φ15.9
	Drain	Indoor unit	mm
	Outdoor unit	mm	φ26.0 (Hole)
Max. interunit piping length	m	50 (Equivalent length 70)	
Max. installation level difference	m	30	
Heat insulation	Both liquid and gas piping		

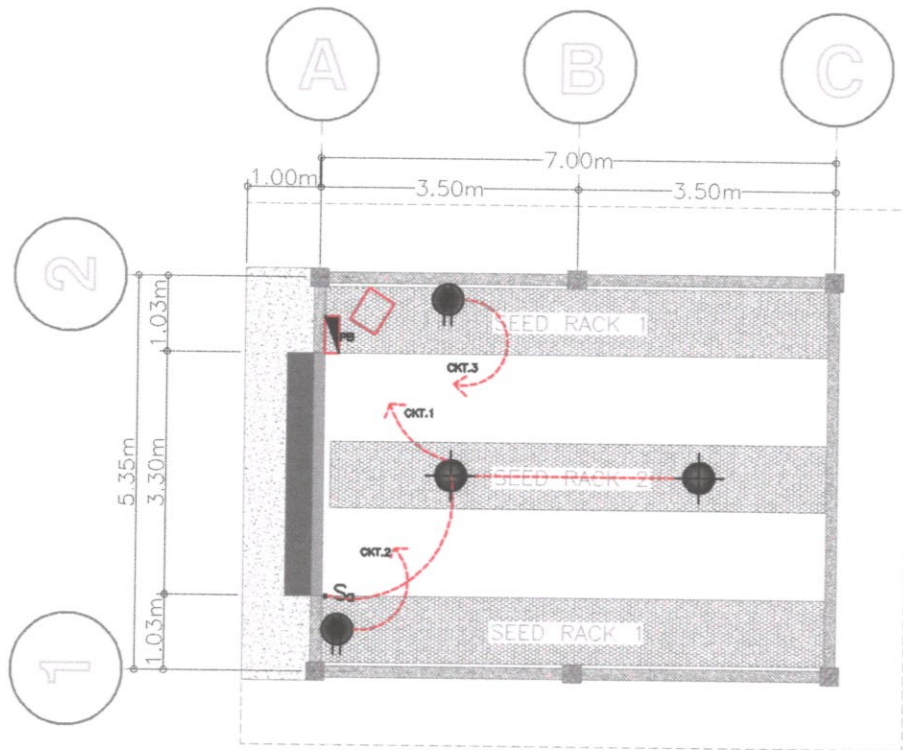
*5.0HP Inverter Floor Mounted Air Conditioning Unit

E AIR CONDITIONING UNIT SPECIFICATIONS
SCALE AS SHOWN

PREPARED BY: SHERIF JOHN C. LA MADRID PRC REG. NO.: 0128359 PROJECT DEVELOPMENT OFFICER III	CONCURRED BY: CYNTHIA G. KISWA NPRCRTC DIRECTOR / END-USER	REPAIR AND IMPROVEMENT OF DIFFUSED LIGHT PURPLE YAM STORAGE BSU LA TRINIDAD CAMPUS, KM.6, BETAG, LA TRINIDAD, BENGUET PROJECT TITLE/ LOCATION	 BENGUET STATE UNIVERSITY	SUBMITTED BY: MELVIN JOHN A. AROMIN PDO DIRECTOR	RECOMMENDED BY: ALLAN C. SACPA VP FOR ADMIN. AND FINANCE	APPROVED BY: FELIPE SALANG COMILA UNIVERSITY PRESIDENT	SHEET NO. 06 07
--	--	--	-------------------------------------	--	--	--	-----------------------

LEGENDS:

-  20 WATTS LED LIGHTING OUTLET
-  ONE GANG CONVENIENCE OUTLET
-  PANEL BOX
-  ONE GANG SWITCH
-  5.0HP INVERTER FLOOR MOUNTED AIRCON



E ELECTRICAL LAYOUT
1 SCALE AS SHOWN

PANEL BOX LOAD TABULATION AND COMPUTATION:

CIRCUIT NUMBER	T Y P E	NO. OF LIGHT/OUTLET	VOLTS	WATTS	AMPERES	TRIP	NO. OF WIRE	WIRE SIZE & TYPE	CONDUIT SIZE & TYPE
CKT.01	LED LIGHTING, 20W	2	230	40	0.17	15 AT	2	2.0mm ² THHN	15mm Ø uPVC
CKT.02	CONVENIENCE OUTLET	1	230	180	0.78	20 AT	2	3.5mm ² THHN	15mm Ø uPVC
CKT.03	5.0HP INVERTER FLOOR MOUNTED ACU	1	230	4850	21.09	30 AT	2	5.5mm ² THHN	20mm Ø uPVC
TOTAL				5070	22.04				

TABLE 2.20.3.3 PEC
FIRST 3000VA AT
REM. (5070-3000)VA AT

⊙100%DF - 3,000.0VA
⊙35%DF - 724.5VA
NET. TOTAL = 3,724.5VA

$I_{TOT} = 3,724.5/230 = 16.19AMP.$
USE: 40AT, 2P, 240 FOR MAIN SERVICE EQUIP.
2-8mm.SQ. THHN FOR FEEDER CONDUCTOR

PREPARED BY:


SHERINE JOHN C. LA MADRID
PRC REG. NO.: CE 0128359
PROJECT DEVELOPMENT OFFICER

CHECKED BY:

DIEGO D. BULANGEN SR.
REGISTERED MASTER ELECTRICIAN
ADMINISTRATIVE ASSISTANT III, GSO

CONCURRED BY:


CYNTHIA G. KISWA

NPRRTC DIRECTOR / END-USER

REPAIR AND IMPROVEMENT OF
DIFFUSED LIGHT PURPLE YAM
STORAGE

BSU LA TRINIDAD CAMPUS, KM.6, BETAG,
LA TRINIDAD, BENGUET

PROJECT TITLE/ LOCATION




**BENGUET
STATE
UNIVERSITY**


SUBMITTED BY:


MELVIN JOHN M. AROMIN
PDO DIRECTOR

RECOMMENDED BY:


ALLAN C. SACPA
VP FOR ADMIN. AND FINANCE

APPROVED BY:


FELIPE SALANG COMILA
UNIVERSITY PRESIDENT

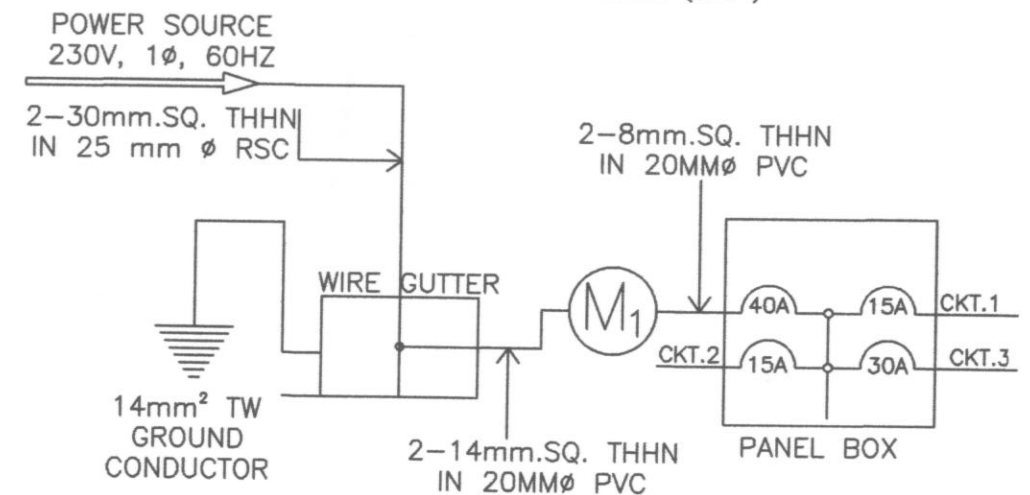
SHEET NO.

07

07

GENERAL ELECTRICAL NOTES

- ALL ELECTRICAL WORKS SHALL CONFORM TO THE LATEST EDITION OF PHILIPPINE ELECTRICAL CODE, TO THE RULES AND REGULATIONS OF LOCAL AND NATIONAL AUTHORITIES CONCERNED AND THE REQUIREMENTS OF LOCAL UTILITY COMPANIES.
- WIRING METHODS SHALL BE AS FOLLOWS
 - MAIN SERVICE ENTRANCE RIGID STEEL CONDUIT (RSC)
 - RACEWAYS EMBEDDED IN CONCRETE WALL AND FLOORING POLYVINYL CHLORIDE (PVC)
 - RACEWAYS NOT EMBEDDED IN CONCRETE ELECTRICAL METALLIC TUBING (EMT)
- SERVICE VOLTAGE ENTERING THE STRUCTURE SHALL BE 220 VOLTS SINGLE PHASE TWO WIRE SYSTEM.
- MINIMUM SIZE OF WIRE AND OF CONDUIT SHALL BE 2.0 mm Ø THHN (#14 AWG) AND 15mm (1/ 2") NOMINAL DIAMETER RESPECTIVELY, UNLESS OTHERWISE SPECIFIED ON PLANS.
- NO BRANCH CIRCUIT WIRING IN LIGHTING AND POWER SHALL HAVE A LOAD MORE THAN 80% OF IT'S RATING.
- ALL MATERIALS TO BE USED SHALL BE NEW AND APPROVED TYPE APPROPRIATE FOR BOTH LOCATION AND INTENDED USE.
- UNLESS OTHERWISE SPECIFIED, PULLBOXES OR JUNCTION BOXES SHALL BE PROVIDED WHENEVER REQUIRED AND NECESSARY, ALTHOUGH SUCH BOXES ARE NOT INDICATED ON PLANS.
- FOR EACH SPARE CIRCUIT IN PANEL BOARD, PROVIDE AN EMPTY CONDUIT 20mm Ø (3/ 4") DIAMETER TERMINATING TO A COVERED SQUARE BOX.
- ALL LOADS SHALL BE PROPERLY AND ADEQUATELY GROUNDED.
- ALL MATERIALS AND EQUIPMENT TO BE USED SHALL BE BRAND NEW AND OF APPROVED TYPE AS LOCATION AND PURPOSE.
- KITCHEN PLANS SHALL GOVERN ON THE ACTUAL LOCATION AND DIMENSION PRIOR TO ROUGH-IN OF CONDUIT AND PIPES.
- ALL INSTALLATIONS AND WIRING SHALL BE CONCEALED FROM VIEW AND SHALL BE ENCASED IN POLYVINYL CHLORIDE (PVC) CONDUITS OR ELECTRICAL METALLIC TUBING (BMT) OR RIGID STEEL CONDUITS (RSC).
- ALL JUNCTION BOXES, DISCONNECTS, ETC. SHALL BE INSTALLED SO AS NOT TO INTERFERE WITH EQUIPMENT PLACEMENTS.
- ALL 20-AMPERES CIRCUIT HOMERUN TO PANEL BOARD MORE THAN 30 METERS IN LENGTH SHALL BE 5.5mm Ø THHN. (# 10), UNLESS OTHERWISE SPECIFIED ON PLANS.
- LIGHT CONTROL SWITCHES SHALL BE RATED 10A 300V AND SHALL CARRY A LOAD GREATER THAN 50A.
- AN EMPTY 3/ 4" DIA. RISER TERMINATING IN A 2" DEEP BY 4" OCTAGONAL BOX ABOVE CEILING SHALL BE PROVIDED TO ACCOMMODATE THE SPARE CIRCUIT IN PANELBOARD.
- ALL WORKS SHALL BE DONE WITH THE DIRECT SUPERVISION OF A DULY LICENSED ELECTRICAL ENGINEER OR A REGISTERED MASTER ELECTRICIAN.
- OUTLET BOXES SHALL BE AS FOLLOWS:
 - LIGHT OUTLETS 1-1/ 2" DEEP BY 4" OCTAGONAL BOX WITH ONE OR TWO WAY ENTRIES
 - RECEPTACLES 2-1/ 8" DEEP 2"x4" UTILITY BOX ONE GANG WITH RAISED PLASTIC COVER
- MOUNTING HEIGHTS SHALL BE AS FOLLOWS:
 - LIGHTING SWITCHES 1370mm ABOVE FLOOR FINISH (A.F.F.)
 - CONVENIENCE OUTLETS 300mm (A.F.F.)
 - PANEL BOARDS 1700mm (A.F.F.)



E SINGLE LINE DIAGRAM
2 SCALE 1:100